

Dawlish Repertory Company

At The Shaftesbury Theatre

2001/2002
Season

16th – 20th October 2001
Checkmate
by Leslie Sands
Directed by Louise Allison

4th – 12th January 2002
Robin Hood and
the Babes in the Wood.
Directed by David Last

26th February – 2nd March 2002
Filumena
by Eduard de Filippo
Directed by Brian Doyle

16th – 20th April 2002
to be announced
Directed by Grace Matthews

18th – 22nd June 2002
The Man with a Load of Mischief
by Ashley Dukes
Directed by Steve Crockford

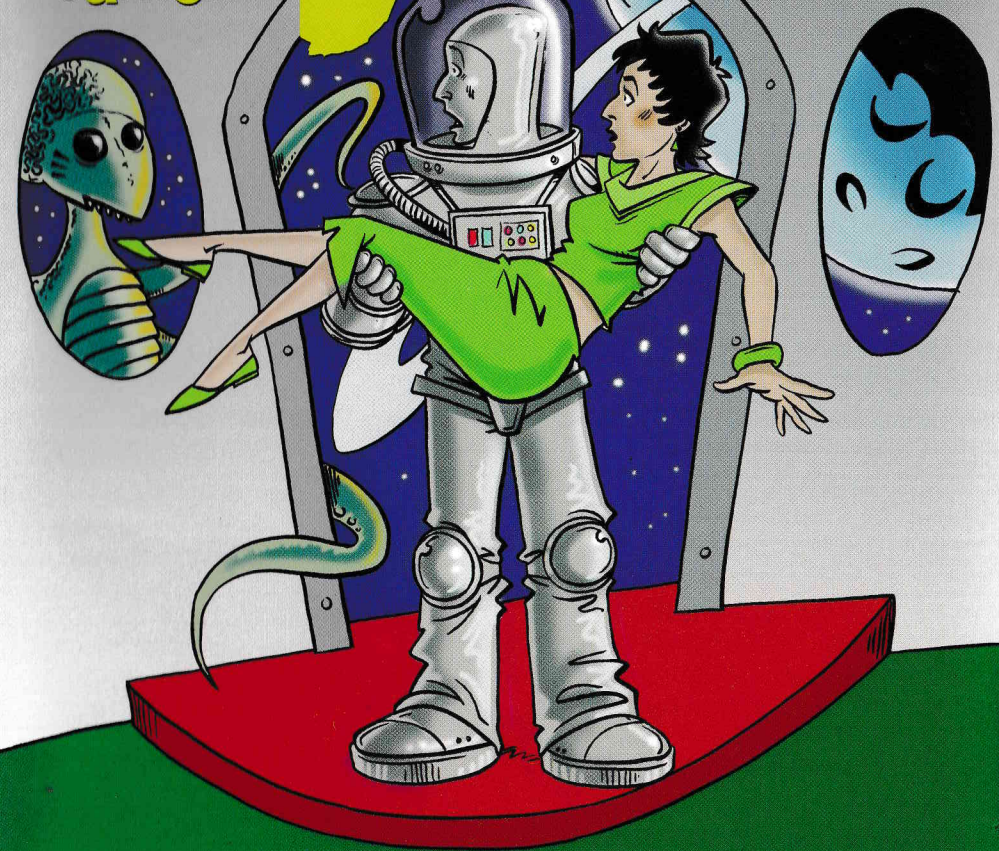
5th – 10th August 2002
Wedding of the Year
by Norman Robbins
Directed by Don Beesley

The Mitre Players Present

Return to the FORBIDDEN PLANET

By Bob
Carlton

Shakespeare's
Forgotten
Rock and Roll
Masterpiece



Captain's Announcement

I would like to welcome you aboard The Mitre Players' routine scientific survey flight, more commonly known as our summer musical, 'Return to the Forbidden Planet'. This is our touring show for 2001 and will be presented both at our home base in Surrey and at the Shaftesbury Launching Pad, Dawlish. We would ask you to note your nearest exit for disembarkation should an emergency arise.

Often billed as 'Shakespeare's Forgotten Rock and Roll Masterpiece' this in-flight entertainment is 'The Tempest' revamped into a 'Star Trek' setting, cleverly entwining memorable music from the 60's into the plot. The show is enormously challenging for an amateur society, both in front and behind the scenes and we hope you will feel the result is out of this world!

The Mitre Players always try to vary their choice of shows, presenting everything from rock musicals to straight period pieces. Indeed I feel it is one of our strengths that we can tackle such a cross section of theatre. This gives us the opportunity to include as many people as possible in our shows during the year. Our next production, 'Season's Greetings' by Alan Ayckbourn, will be about as different as you can get from tonight's show! It is a comedy, which we hope will be as enjoyable as this show, but none-the-less requiring different skills to perform. We look forward to you joining us for that flight of fantasy too.

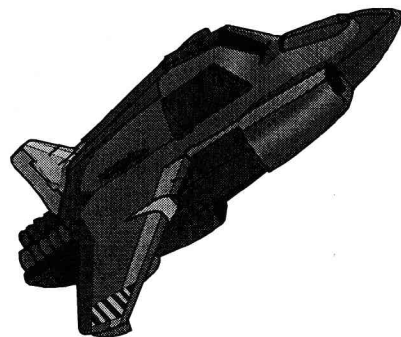
Now, we ask you to secure all your baggage, fasten your seatbelts and ensure your seat is in the upright position ready for take off. Refreshments will be served halfway through the flight in the bar area whilst we take a break for refuelling. To avoid congestion our Refreshment Operatives will be pleased to take your order prior to take off.

If you are interested in joining The Mitre Players or would like more information, you can log on to our web site at www.themitreplayers.com or can call our membership secretary, Julia Ascott on 020 8239 1010.

Finally, I would like to thank you for choosing Mitre Air and hope that you have an enjoyable flight.

Andy Thompson.

Chairman, The Mitre Players.



THE MITRE PLAYERS

The Dramatic Section of the Old Boys Association of Trinity School

Present

RETURN TO THE FORBIDDEN PLANET

Shakespeare's Forgotten Rock and Roll Masterpiece

By Bob Carlton

Inspired by the motion picture "Forbidden Planet"
courtesy of Turner Entertainment Co.

Director: Charles Marriott
Musical Director: Andrew Rapps
Choreographer: Lorraine Tilchener

OMWA Clubhouse, Sanderstead
31st July to 3rd August 2001

Shaftesbury Theatre, Dawlish
21st to 25th August 2001

An amateur production by arrangement with Warner Chappell Music Ltd.

THE ANIMALS

Formed from the ashes of the Alan Price combo in 1963, legend has it that The Animals were given their name by their fans due to their wild stage act. In 1964 they toured the UK with Chuck Berry and the Swinging Blue Jeans. Later that year House of The Rising Sun topped the UK charts despite its length (4½ minutes). Subsequent hits included *Don't Let Me Be Misunderstood* (1965), *We've Got To Get Out Of This Place* and *I'm Gonna Change The World*.

THE BEACH BOYS

Featuring the Wilson Brothers, Brian, Dennis and Carl and two friends, they had many hits in the early sixties, including, *Wouldn't It Be Nice*, *Sloop John B* and *God Only Knows*. The 1966 album *Pet Sounds* took over six months to record and features the classic *Good Vibrations*. It reached number one on both sides of the Atlantic and as a result they replaced The Beatles as 'The World's Best Group' in that year's NME poll.

CHUCK BERRY

Born in 1926, Charles 'Chuck' Berry first hit the US charts with *Maybellene* in 1955. Roll over *Beethoven* also charted in 1956. Further hits, *Sweet Little Sixteen* and *Jahnnny B Goode* followed. However Berry's best selling UK single wasn't until 1972 with the novelty number *My Ding-a-Ling*.

THE BYRDS

Formed in 1964 as The Jet Set, they soon changed their name to The Beefeaters and then The Byrds. Their first album, *Mr Tambourine Man*, was produced by Doris Day's son, Terry Melcher, it featured four songs by Bob Dylan. The title song topped the charts on both sides of the Atlantic. *Mr Spaceman* was featured on their 1966 album, *Fifth Dimension* and although regarded by many as a classic pop song, it only reached number 36 in the US charts.

DION AND THE BELMONTS

Founded in 1957 by Dion DiMucci and a group of boys from the Bronx, they got their name from Belmont Avenue, a well known local hang-out. In 1959, *Teenager in Love* only reached number 28 in the UK because both Marty Wilde and Craig Douglas covered it first. In 1962, *The Wanderer* was a hit on both sides of the Atlantic, it was Dion's last UK hit until it was re-released in 1976.

CONNIE FRANCIS

A child prodigy, born in 1938, Connie's first nine singles failed to make the charts, but as she was about to start at New York University she recorded *Who's Sorry Now* which featured on the first ever Dick Clark's American Bandstand. *Robot Man* reached number 2 in the UK in 1960. Various hits followed and she continued recording into the 1990s. In 1972 she sang for the US President, Lyndon Johnson.

BILL HALEY AND HIS COMETS.

He began his career as a professional musician in 1942, straight from school, however it was not until 1953 that he had his first hit, *Crazy Man Crazy*. This was the first Rock & Roll disc to enter the *Billboard* pop charts. This coincided with him changing the name of his group to Bill Haley and his Comets. A subsequent move to Decca Records in 1954 continued his rise to fame. The B side of his first single for them was *Rock Around the Clock* and his second single *Shake, Rattle and Roll*.

JERRY LEE LEWIS

Almost as famous for his scandalous private life as his songs, Lewis's second single *Great Balls of Fire* never reached number one in the US; it was kept off the top by Danny and the Juniors' *At the Hop*. It did however reach number one in the UK. In 1988 Dennis Quaid played Lewis in the Drama/Documentary feature film, *'Great Balls of Fire*

THE MOODY BLUES

Originally called The MB Five, they started playing at The Carlton Ballroom, Birmingham in 1964. In 1965, their second single *Go Now* reached number one on both sides of the Atlantic. Later that year they supported The Beatles on their last UK tour. This success was not repeated until 1968 when their classically inspired *Nights in White Satin* reached the charts featuring The London Festival Orchestra

ROY ORBISON

Born in 1936, Roy started his career in 1954 representing Texas at The International Lions Club Convention in Chicago. Despite many recording contracts and releases, he had to wait until 1960 when *Only the Lonely* reached number two in the US charts. Originally offered to Elvis Presley and The Everly Brothers it topped the UK charts later that year. Orbison re-launched his career in 1988 with The Travelling Wilburys, featuring Jeff Lynne, Tom Petty and Bob Dylan. This was short-lived as he died later that year from a heart attack.

CLIFF RICHARD

Born Harry Webb in India, 1940. Cliff's debut single was in 1958. In competition with Elvis's *Blue Hawaii*, The film *The Young Ones* was the second biggest box office grosser of 1962. Never out of the limelight, Cliff has continued recording till the present day. In 1989, his duet with Van Morrison, *Whenever God Shines His Light* was released for Christmas.

THE TORNADOS

The Tornados were formed in 1962 from session musicians by the legendary producer Joe Meek to back Billy Fury. Their first single *Love and Fury* flopped but their second, *Telstar*, inspired by the recently launched communication satellite, topped the UK charts for 5 weeks and the US chart for 3 weeks. In 1965 they wrote the theme tune for Gerry Anderson's 'Slingray'.

THEM

Featuring vocalist Van Morrison, Them were one of the first R & B / Beat groups in Northern Ireland, a country then dominated by 'Showbands'. Two 1965 singles, *Baby Please Don't Go* and *Here Comes The Night* reached the UK chart. However the B side of the former, *Gloria*, penned by Van Morrison becomes a favourite live song and will be one of the most influential songs of the sixties.

THE ZOMBIES

Formed in 1963 by Rod Argent and Colin Blunstone amongst others whilst still at school. Having left with over 50 'O' and 'A' levels between them, their first single *She's Not There* reaches number 12 in the UK chart and later on number two in the US. Despite an international union agreement, they were initially banned from touring the US because of fears of a British invasion.

RETURN TO THE FORBIDDEN PLANET

The Cast

Captain Tempest	<i>Mike Lilley</i>
Navigation Officer	<i>Lorraine Tilchener</i>
Science Officer	<i>Karen Rapps</i>
Bosun Arras	<i>James Beal</i>
Ariel, the Robot	<i>Dave Price</i>
Cookie	<i>Paul Longhurst</i>
Dr. Prospero	<i>Colin Warnock</i>
Miranda	<i>Clare Dempsey</i>
Newscaster	<i>Warwick Jones</i>
Miranda (Aged 5 months)	<i>Ellie Rapps</i>
Ensigns	<i>Paul Grace, Mark Pearse</i>
Flight Crew	<i>Julia Ascott, Emily Grogan, Cathy Newitt, Fiona Osborn, Lucy Thompson</i>

The Band

Musical Director	<i>Andrew Rapps</i>
Assistant MD. & Keyboards	<i>Andrew Trehwella</i>
Drums (Croydon)	<i>Craig Backway</i>
Drums (Dawlsh)	<i>Richard Wear</i>
Guitar	<i>Clive Furness</i>
Trumpet	<i>Pat Price</i>
Saxophone (Croydon)	<i>Phil Evans</i>
Saxophone (Dawlsh)	<i>Chris Ash</i>

All other instruments played by members of the cast

The Action passes aboard Interplanetary Space Flight 9 and on the Planet D'illyria. The action is continuous.

Please Note:

The Shaftesbury Theatre auditorium has been fitted with an Inductive Loop System. Members of the audience with hearing aids should set them to the "T" position.

Please remember to turn off all Mobile Phones and Pagers.

Members of the audience are reminded that the use of Photographic, Recording or Video equipment is not permitted and in the interest of safety and comfort, please note that smoking is not permitted in the auditorium.

Thank you for your co-operation.

This Evening's In-Flight Entertainment

Wipe Out	Instrumental
Telstar	Instrumental
It's A Man's World	Science Officer and Tempest
Great Balls Of Fire	The Company
Don't Let Me Be Misunderstood	Prospero
Good Vibrations	Ariel, Tempest and Company
The Shoop Shoop Song	Cookie and Bosun Arras
I'm Gonna Change The World	Tempest, Ariel and Prospero
A Teenager In Love	Miranda
Young Girl	Tempest
She's Not There	Cookie
Shakin' All Over	Prospero, Tempest and Miranda
Gloria	Company

20 MINUTE INTERVAL

Drinks and coffee will be available from the bar. Interval drinks may be ordered from the bar before the performance. Ice creams will be on sale in the auditorium during the interval.

Gloria (Reprise)	Company
Who's Sorry Now	Ariel
Tell Her	Science Officer and Company
Robot Man	Miranda
Shake, Rattle and Roll	Cookie and Company
Go Now	Science Officer
Only The Lonely	Cookie
The Young Ones	Tempest and Miranda
Get Out Into Space Medley	Tempest and Company
Wipeout	Instrumental
Mr. Spaceman	Miranda and Company
The Monster Mash	Prospero and Company
Great Balls of Fire	Company
Finale Medley	Company

The Support Crew

Director

Charles Marriott

Musical Director

Andy Rapps

Choreographer

Lorraine Titchener

Assistant Choreographer

Fiona Osborn

Lighting Design

Alan Bishop

Sound Design

Colin Marshall

Set Design

Jill Wilson

Special Effects

Andrew Thompson

Costumes

Anna Warnock

Properties

Sue Carter

Backstage, Construction, Costume and Technical Team

Gillian Bartle, Lesley Bates,
Matthew Beal, Alan Bishop,
Sue Carter, Michael Clark,
Alan Collins, Diana Dobson,
Mary Holton, James McLeod,
Colin Parrish, Lou Parrish,
Julian Parsons, Dave Price,
Dave Richards, Jan Richards,
Geoff Saw, Charles Thomas,
Andy Thompson, Lucy Thompson,
Anna Warnock, Tony Lyon-Williams

Rehearsal Pianists

James Beal, Paul Longhurst

Prompter

Gillian Bartle

Video Production

Julia Ascott, Gillian Bartle
Alan Bishop, Charles Marriott,
Dave Price, Andrew Thompson,
Neil Toal, Jill Wilson

Video Post Production Facilities

4MC UK Ltd. Swordfish Editing,
CPM Developments

Video Sequences

Recorded at the OMWA
Clubhouse

Loan of Video Equipment

Tony Day, The Reel Thing Ltd,
4MC UK Ltd.,

Poster and Handbill Design

Gary Andrews, Alan Bishop

Programme

Alan Bishop, Anna Warnock

Publicity

Liz Kallend

Photography

Marcus Ascott

Box Office (Croydon)

Carolyn Backway

Box Office (Dawlsh)

John Bartle,
Marilyn Brimacombe

Front of House (Croydon)

Martin Garnett and Friends of The
Mitre Players

Front of House (Dawlsh)

Jane Cruickshank, Enid Ghent
Matthew Sexton, Paul Smith
and members of the Dawlish
Repertory Company

Production Manager

Gillian Bartle

Meet the Cast

JULIA ASCOTT (Crew Member)

Julia is still mystified by her involvement in this production as she didn't audition and can't play any musical instrument. She has come to the conclusion that we must have been desperate! She adds that she had never seen the show so could not have predicted what she was letting herself in for. Despite being an active member for many years, Julia has never been in a Dawlish production before and decided it was about time she experienced it.

CRAIG BACKWAY (Drums, Croydon)

Craig, renowned as the non-rhythmically dyslexic drummer and the Australian cultural attaché to Sanderstead, has been enlisted into yet another Mitre production. With a cerebrum that is not from this planet, he is well suited to a show based in another part of the universe. He has been with us for the last ten years in an assortment of capacities ranging from tea making to resident casualty officer.

JAMES BEAL (Bosun Arras)

This is James' second attempt at a bit of acting with the Mitres, following on from his world debut as a rather camp Arvide in our junior production of *Guys and Dolls*. Thankfully, for this production, James doesn't have to rely solely upon his acting skills,

crossing, as he does, the line between cast and band, fulfilling his more usual role upon the keyboards. James was "MD" for last year's Spring Revue and was more recently seen playing rag time and wearing a silly waistcoat in *Barnum* at Trinity School.

CLARE DEMPSEY (Miranda)

Clare's first experience with "Forbidden Planet" was as a member of the audience when her school performed it in 1998. Since then she has always wanted to appear in it and was thrilled to hear that the Mitre Players would be doing it. This is her third show with us and we sincerely hope there will be many more.

PHIL EVANS (Saxophone, Croydon)

Incredibly, Phil had never picked up a Saxophone before the dress rehearsal of "Forbidden Planet". He says he was therefore quite surprised when he received the call asking him to be in the band. "I'm sure it will be like riding a bike", he said, "And I can do that".

CLIVE FURNESS (Guitar)

Good, in tune, capable – are all words that are not normally used to describe Clive's guitar playing but this production has proved to be an exception to the rule. A regular member of various bands, Clive is also a singer and, if pushed, an actor as well.

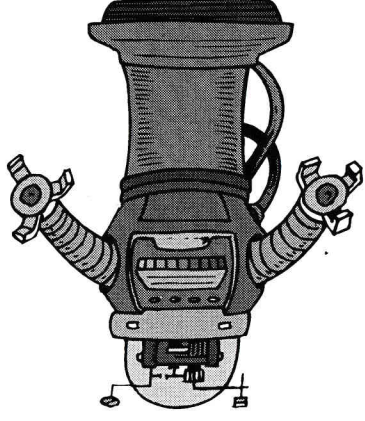
and extremely unpopular bands over the years. He currently lives in the 70's with his cats and battery chargers.

PAT PRICE (Trumpet)

Patrick has dreamt of being on the stage for years, usually in nightmarish. A regular fixture since 1990 he is used to being dressed in black and hiding in pits. His favourite roles include "First Trumpet" and "Only Trumpet" in so many productions he won't even start to try and put them into a list of favourites: musicals - they're all the same aren't they?

ANDY RAPPS (Musical Director)

Andy has musically directed a number of shows for the Mitre Players over the years and some of them have even been quite good. He is really looking forward to a "Busman's Holiday" in Dawlish as it makes a welcome change from his usual job as Assistant Musical Director for The Witches of Eastwick in London's West End.



CATHY NEWITT (Crew Member)

Cathy ended up being in this show because she didn't want to feel left out. She has always been a big fan of "Forbidden Planet" having first seen it in London and then at least five performances of subsequent tours. It comes as a great surprise to her that she is involved in this show and she is unable to play any musical instrument, not even a few notes!

FIONA OSBORN (Crew Member/Assistant Choreographer)

This is Fiona's first show since the birth of her son, Thomas, just over a year ago. She is delighted to be back in the world of rehearsals and shows particularly as it means that someone else will be changing dirty nappies while she is out enjoying herself, helping to teach the Mitres how to dance.

MARK PEARSE (Ensign)

After two Mitres shows in less than six months, a third challenge was on the cards and what a challenge! He thought there was more to this dancing than his two left feet could handle but after much effort they appear to have balanced out. He is looking forward to the Mitre Players' version of "Riverdance"!

DAVE PRICE (Ariel)

Dave was born half man and half robot which served him well when ...er...he auditioned for the robot part in this show. He has played bass guitar in a variety of popular

programme note. Suffice it to say he has been a Mitre Player longer than most of the cast have been alive and thinks appearing in a show without having to rehearse or even turn up is an excellent way of taking part!

MIKE LILLEY (Tempest)

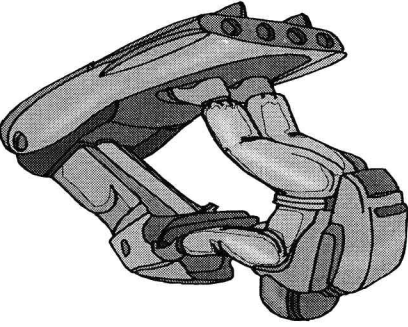
Faced with the choice of changing dirty nappies for his son, Thomas, whilst his partner, (Fiona) was out enjoying herself at rehearsals, Mike decided that being involved in this show would be the lesser of two evils. "Return to the Forbidden Planet" marks a welcome return for Mike to the Mitre Players after a short absence.

PAUL LONCHURST (Cookie)

Already a guitarist, Musical Director, Director, not to mention an experienced Shakespearean actor (Romeo, Edgar, Cymbio), Paul has wanted to play Cookie ever since he heard of this show! He hopes regular audiences will forgive any similarity to any characterisations from previous Mitre roles ('check your buttons!').

CHARLES MARRIOTT (Director)

This is only the second theatrical production that Charles has directed. With 32 years experience of directing in the film and television industry, Charles feels that "Return of the Forbidden Planet" ranks as one of life's challenges. He has politely omitted to say that working with the Mitre Players is another one!



PAUL GRACE (Ensign)

Paul's many talents stretch to playing the guitar on stage in tonight's show. He is a very busy thespian, this being his eighth show since leaving school only a year ago. He is well known for managing to incorporate amazing back-flips into most of his performances. At the time of going to press he had been unable to persuade the Director to sneak one into this show.

EMILY GROGAN (Crew Member)

After thoroughly enjoying herself appearing as a Hot-Box girl in our junior production of Gugs and Dolls, Emily decided to audition for "Forbidden Planet" and was thrilled to be accepted as a crew member. She says it is fantastic being part of a great group of people who enjoy the same hobby as her. The Mitre Players are grateful for her youthful enthusiasm and hope she is not too easily disillusioned.

WARWICK JONES (Newscaster)

Warwick is far too concerned about the Ashes series this summer to write a proper

KAREN RAPPS (Science Officer)
Karen is really excited to be doing the part of the evil Science Officer as she says there will be no acting required on her part. She is also looking forward to this being a real family show with her husband, her sister-in-law and 5 month old daughter, Ellie, all being involved. She is slightly concerned at being upstaged by the youngest member of the Rapps' family!

LUCY THOMPSON (Crew Member)
This is Lucy's eighth show for the Mitre Players', having first appeared for us at the age of six. No stranger to theatre, Lucy has been learning ballet, tap and modern since the age of four and has appeared in countless dance shows. Lucy is also learning to play the keyboard.

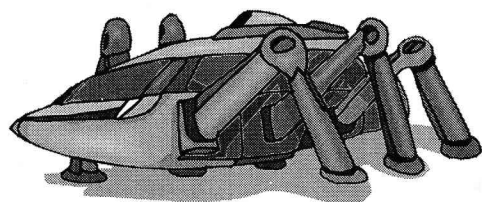
LORRAINE TITCHENER (Choreographer/ Navigation Officer)
Lorraine says she is appearing in this show because it is an opportunity to be a 'navigator'. She is not normally known for her geographical skills. It has also given her the chance to debut as choreographer which she has enjoyed immensely having discovered that, contrary to popular belief, the cast do not have two left feet. Well done Crew!!!

ANDREW TREWHELLA (Keyboards & Assistant Musical Director)
Re-christened 'Very Nice Fella' (VNF' for short) by the Mitres many

years ago whilst on the music staff at Trinity, Andrew escaped and is now Director of Music at Wellington School, Somerset. There, amongst other things, he continues to MD, direct and play for musicals, both at schools and in the locality. Despite everything, he is always pleased to maintain his links with the Mitre Players, and has been in the band for the majority of their summer touring shows.

COLIN WARNOCK (Prospero)
Fans of Colin will be surprised to learn that he has been a secret admirer of Shakespeare for many years. He is very grateful to the Mitre Players for allowing him the opportunity to be involved in this production. Indeed, Colin's enthusiasm and knowledge of Shakespeare's language have been a great source of inspiration for the cast and their director.

RICHARD WEAR (Drums, Dawlish)
Richard's only connection with the Mitre Players is that he was best man at Karen and Andy's wedding. He hasn't actually played drums for 15 years but the Rapps family just fancied having their Best Man with them on holiday for the week. We wish him luck!



the mitre players

Present

Season's Greetings

By Alan Ayckbourn

Directed by Paul Beard

The Mitre Theatre,
Trinity School,
Shirley Park, Croydon

Thursday 25th to
Saturday 27th October 2001

Box Office: Sheila Garnett
020 8650 7882