



Officials

President Mark Bishop
Past Presidents Chris Tarrant, Robin Wilson
Vice-Presidents Julia Ascott, Gillian Bartle,
John Bartle, Alan Bishop, Sheila Garnett,
Warwick Jones, Peter Stockwell, Andy Thompson, Martin Tyrrell,
Anna Warnock, Colin Warnock

Current Committee

Chairman Alan Merricks
Secretary Di Jones
Treasurer Alan Bishop
Additional Members Ian Brown, Katy Davies,
Sue Marr, Charles Marriott, Joe Pepper, Anna Warnock

Additional Contacts

Theatre Club Organiser Colin Warnock
Membership Secretary Julia Ascott
Box Office Number 0845 2255799

The Mitre Players is the dramatic society of the Old Boys of Trinity School (The Trinity Mid Whitgiftian Association). We are a very friendly and sociable society, presenting 4 or 5 productions a year in a wide variety of venues. Putting on a show not only requires people on stage, but also involves a great deal of hard work behind the scenes. We design, build and paint our own sets, find and make our own props, make many of our own costumes and use "in house" musicians whenever possible.

We would welcome any new members, so if you have any aspirations to act, sing, dance or play a musical instrument, we would like to hear from you. If you prefer to

remain out of the spotlight, building scenery, lighting, painting, making costumes, making props, doing 'Front of House' or simply would like to make tea for the team, we would still like to hear from you.

Most of our rehearsals take place at the TMWA Clubhouse in Sanderstead. The bar facilities at the clubhouse lend a social and convivial atmosphere to our rehearsals and all members are encouraged to use the facilities at Sanderstead as often as possible.

If you would like more information, please contact our Membership Secretary: Julia Ascott on: 020 8239 1010 or visit our Web Site at www.mitreplayers.org.uk



**SUMMER
2010**

Chairman's Letter

As the newly-elected Chairman of The Mitre Players, I have great pleasure in welcoming you to our summer production, *Moby Dick! The Musical*. For anyone who may be expecting special effects including an inflatable Great White Whale splashing around the auditorium....

Our story is that of St. Godley's Academy for Young Ladies who try to bail out the bankrupt school by putting on a musical production of *Moby Dick*. And the result, as you will soon discover, is a musical the likes of which you will have never seen before!

Moby Dick! The Musical is a production of which we are rightly proud, and shows the Mitre Players at our ground breaking best. The Director and the Choreographer (Julia Ascott and Helen Harman respectively) have used every ounce of their considerable experience and expertise to produce a show that promises to be a real "theatrical experience", both visually and vocally.

The Mitre Players are taking the production on tour to the legendary Minack Theatre in Porthcurno (just outside Penzance) in August, and the entire team are looking forward to once again playing in this superb venue hewn from the living rock and overlooking the Atlantic. If you have never visited the Minack - you really should!

Once again we have enjoyed a successful year so far with a return to tradition last January with *Ali Baba and the Forty Thieves* at the superbly revamped Concert Hall at Trinity, and then our Easter production was *Timing*, written by comedian and impressionist Alistair McGowan and directed by Charles Marriott, who you will see doubling as the Caretaker and Pierre in *Moby*.

The Mitre Players could not exist without the enthusiastic support of our members, and we are always looking to welcome new faces – whatever is your thing – acting, singing, dancing, music, props, set building, prompting, generally helping out occasionally - or preferably all of those things! – please, please do make contact. Please visit our web site:- www.mitreplayers.org.uk

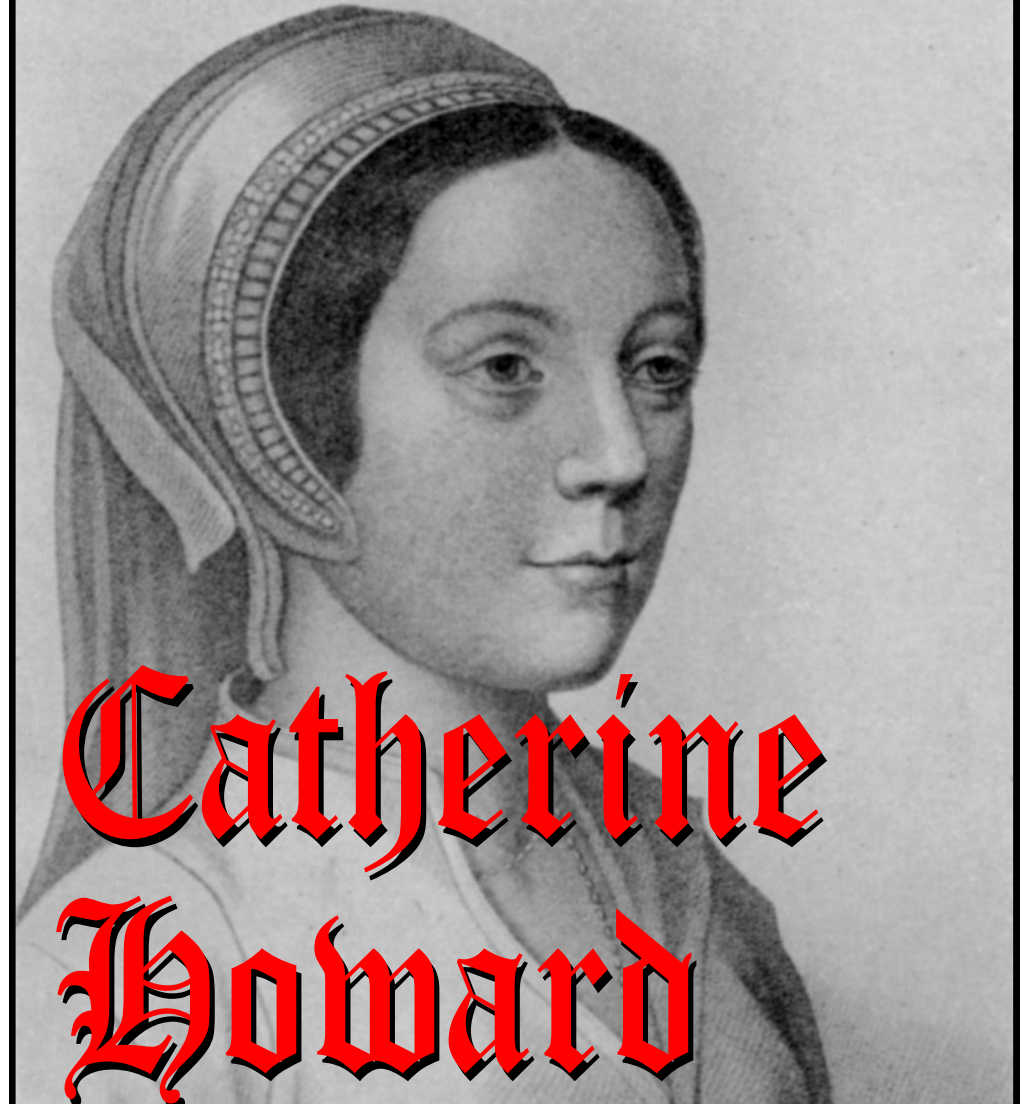
Finally, I would like to take this opportunity to thank Andy Thompson for all his enthusiasm and hard work as Chairman over the previous years. His will be a hard act to follow. Fear not though, he can still be found backstage creating awesome special effects! I wish you an enjoyable evening and look forward to meeting you.

With best wishes,

Alan Merricks

Chairman

Our Autumn Production



by Beverley Cross

The Mitre Theatre, Trinity School, Shirley Park, Croydon CR9 7AT

Thursday 21st to Saturday 23rd October 2010 at 7.30

Tickets: £9.00 Box office: tickets@mitreplayers.org.uk or 07914 763422

Emily Smyth

Elsa Smolders: *Esta, Ahab's Wife*

Emily is a 19 year old student studying history and international relations at Royal Holloway, University of London. *Moby Dick! The Musical* is her first Mitre Players' production. Emily has lived in the Republic of Ireland for the past six years where she worked part-time teaching drama and music at her local stage school. She also performs as a singer songwriter at numerous venues throughout the year. In fact her last song which she performed at the "Live and Unsigned" music competition in London this February was entitled "Anchor": obviously symbolic of the nautical theme which surrounds *Moby Dick!* Her most recent role was playing Princess Gill in *Jack and the Beanstalk*, the pantomime at her university. She doesn't like heights or sailing and so is perfect to play a sea captain's wife who is very whimsical near cliff faces!

Lucy Thompson

Lucinda Taptoe: *Mary, Starbuck's wife*

Lucy has never felt well on boats, ferries or indeed at sea! It is shocking then that she has made it through rehearsals without any illness! Lucy performed in *Boogie Nights* last summer and thoroughly enjoyed choreographing the panto this year. She is looking forward to *Moby Dick!* and, fingers crossed, her sea legs remain steady, even if her dancing ones can't.

Forthcoming Mitre Player Productions

Catherine Howard

Mitre Theatre. Trinity School 21st to 23rd October 2010

A Mitre Mince Pie. A Seasonal Revue

TMWA Clubhouse, 8th to 10th December 2010

Our House - The Madness Musical

The Mitre Theatre, Trinity School, 24th to 26th February 2011

For further information including audition details and ticket info, please log on to www.mitreplayers.org.uk

THE MITRE PLAYERS

Present

Moby Dick! *The Musical*

By Robert Longden and Hereward Kaye

Musical arrangements by Martin Koch

The authors would like to reluctantly acknowledge interference from

Russell Ochocki and Cameron Mackintosh

Director

Julia Ascott

Assistant Director & Choreographer

Helen Harman

Musical Director

Colin Warnock

The Mitre Theatre, Croydon.

Thursday 15th to Saturday 17th July 2010

The Minack Theatre, Porthcurno

Monday 2nd to Friday 6th August 2010

This amateur production is presented by arrangement with Josef Weinberger Limited on behalf of Music Theatre International of New York

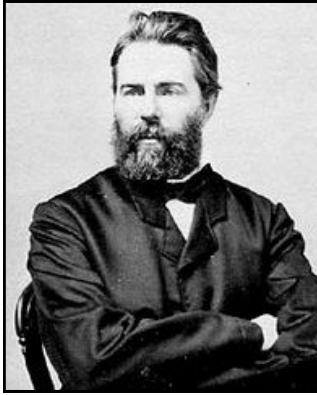
Herman Melville

(1st August 1819 – 28th September 1891)

He was an American novelist, short story writer, essayist and poet, whose work is often classified as part of the genre of dark romanticism. He is best known for his novel *Moby Dick* and novella *Billy Budd*, the latter of which was published posthumously.

His first three books gained much attention, the first becoming a bestseller, but after a fast-blooming literary success in the late 1840s, his popularity declined precipitously in the mid-1850s and never recovered during his lifetime. When he died in 1891, he was almost completely forgotten. It was not until the "Melville Revival" in the early 20th century that his work won recognition, most notably *Moby Dick* which was hailed as one of the chief literary masterpieces of both American and world literature. .

Following brief stints as a clerk and schoolteacher, Melville signed on as a cabin boy with the trade ship *St. Lawrence* in 1839, completing a round trip to Liverpool. Upon his return, he again taught school, unsuccessfully sought work in New York City, and travelled on a Mississippi River steamboat. In January 1841, Melville's life took a significant turn as he sailed as a crew member on the American whaler *Acushnet*, taking the Cape Horn route to



the Pacific Ocean. There, in the summer of 1842, he and a friend jumped ship in response to the wretched conditions on board and the brutality of the ship's officers. Melville lived with friendly cannibals in the interior of Nuku Hiva for a month or so before joining the crew of the Australian whaler *Lucy Ann*.

Melville's difficulty with the stern discipline aboard ships of the day continued. At Tahiti in September 1842, he and several other rebellious sailors refused to follow orders and were imprisoned on land. Easily escaping a few weeks later, Melville sailed on an American whaler, the *Charles and Henry*, ending up in Hawaii where, in April

1843, he was discharged and worked as a clerk and a pinsetter in a bowling alley.

Moby Dick was published in 1851 and was based on two events, the sinking of the Nantucket whaling ship *Essex* in 1820 after it had been rammed by a large sperm whale and the alleged killing in the late 1830s of the albino sperm whale *Mocha Dick* in the waters off the Chilean island of Mocha. *Mocha Dick* had dozens of harpoons embedded in him following attacks from other whalers, and appeared to attack ships with premeditated ferocity. These events and his experiences in early life, proved to be the inspiration for both his epic novel and eventually, Caterina Cutesy's quirky musical.

Charles Marriott

Groundsman: Pierre, *Ship's carpenter*

Despite not having an affinity with the sea.....it seems odd that this is Charles' second outing to the Minack, the first playing the ship's doctor in *Gulliver's Travels!*

In *Moby Dick*, he draws on all his experience to play the school groundsman, who has a drink problem! Charles usually confines his theatrical activities to directing. Notable productions he has directed for the Mitre Players have been *Return to the Forbidden Planet* and most recently, the challenging new comedy by Alistair McGowan, *Timing*. The nearest he has ever got to a life on the ocean wave was a John West TV commercial back in the 70's (remember them?). He stank of mackerel for weeks!

Fraser Macdonald

Caretaker: *Elijah, Loony sailor*

A Mitre Player for well over 20 years, Fraser has played many roles from Pantomime Dame on several occasions to Fagin in *Oliver!* and he is pleased to add yet another loony to his repertoire in the character of Elijah. He is a National Instructor for the British Sub-Aqua Club and a military diving supervisor and has taught and examined scuba diving for civilians and military personnel both in the UK and abroad. He has swum with whales but never actively hunted them and he is delighted that everyone except Ishmael drowns in the course of pursuing *Moby Dick*. Serves them right! Now retired from heading the Spanish Department at an independent school, Fraser is Chief Examiner in Spanish for a major examinations board and spends a good deal of time organizing and running GCSE and A Level Spanish exams.

Fiona Robertson

Fenella Raunch: *Stubb, Second Mate*

Fiona is enjoying *Moby Dick* and being 2nd mate as it reminds her of when she worked as a Dive Master in Australia on the Great Barrier Reef. Working 5 days on, 3 days off on a 140ft live aboard sailboat was quite the life, especially in the whale season as you'd see them breaching in the distance or up close and personal when she saw a female and her calf. Never a white one though. It wasn't quite such fun though when she spectacularly fell in the water at the back of the boat late at night whilst trying to fuel the tender boat. Luckily she lived to tell the tale.

Alan Geeson

Security Guard: *Pip, Cabin Boy*

Alan, purely looking for a deck dance jig, knew the only place to fulfil such a wish was in The Mitre Player's version of *Moby Dick*. Seeing as Moby or Dick (however one wants to shorten the title) is Alan's fourth Mitre appearance, he thought he knew what he was letting himself in for, but it seems that having to do an onstage assault course was not on the list...

Elaine Hartley

Eloisa Heaven: *Tashtego, Harpooner*

From prancing about on her Dad's sailing boat in the back garden as a young girl, to prancing about on a slightly bigger (but less real) boat with the Mitres, Elaine is not a stranger to the nautical side of life, and seems to keep getting drawn back to life on the sea in various musical theatre adventures! She has been seduced by a hunky sailor as Clare de Lune in the classic *On The Town*; and took to the seas as Hope Harcourt in the spectacular *Anything Goes*. Elaine is now enjoying her chance to play a macho harpooner (school girl) in this fab production of *Moby Dick* with a great cast for company.

Mary Holton

Mrs Mash: *Company*

Mary started out at the Minack as a Munchkin and has progressed through 'Scum of the Earth', a bird, an elephant and a Liliputian to Mrs Mash the dinner lady. Those of you who have experienced Mary's driving will appreciate the need for L-plates as she's been given a tea-trolley to navigate round the stage!

Moby Dick - The Novel

The Synopsis

Ishmael, the narrator, announces his intent to ship aboard a whaling vessel. He travels to New Bedford, Massachusetts, where he stays in a whalers' inn. Since the inn is rather full, he has to share a bed with a harpooner from the South Pacific named Queequeg. At first repulsed by Queequeg's strange habits and shocking appearance (Queequeg is covered with tattoos), Ishmael eventually comes to appreciate the man's generosity and kind spirit, and the two decide to seek work on a whaling vessel together. They take a ferry to Nantucket, the traditional capital of the whaling industry. There they secure berths on the *Pequod*, a savage-looking ship adorned with the bones and teeth of sperm whales. They also mention the ship's mysterious captain, Ahab, who is still recovering from losing his leg in an encounter with a sperm whale on his last voyage.

The *Pequod* leaves Nantucket on a cold Christmas Day with a crew made up of men from many different countries and races. Soon the ship is in warmer waters, and Ahab makes his first appearance on deck, balancing gingerly on his false leg. He announces his desire to pursue and kill Moby Dick, the legendary great white whale who took his leg, because he sees

this whale as the embodiment of evil.

The *Pequod* approaches the equator, where Ahab expects to find the great whale. The ship encounters two more whaling ships, the *Rachel* and the *Delight*, both of which have recently had fatal encounters with the whale. Ahab finally sights Moby Dick. The harpoon boats are launched, and Moby Dick attacks Ahab's harpoon boat, damaging it. The next day, Moby Dick is sighted again, and the boats are lowered once more. The whale is harpooned, but Moby Dick again attacks Ahab's boat.

On the third day, the boats are once again sent after Moby Dick, who once again attacks them. Moby Dick rams the *Pequod* and sinks it. Ahab is then caught in a harpoon line and hurled out of his harpoon boat to his death. All of the remaining whaleboats and men are caught in the vortex created by the sinking *Pequod* and pulled under to their deaths. Ishmael, who was thrown from a boat at the beginning of the chase, was far enough away to escape the whirlpool, and he alone survives. He is eventually picked up by the *Rachel*, which is still searching for the crewmen lost in her earlier encounter with Moby Dick.

The Mitre Players would like to thank:

The Governors and Headmaster of Trinity School for permission to perform in The Mitre Theatre

Robin McKinlay, Mario Sammut, Phil Jupp and all the staff at Trinity.

Gresham School for the loan of Gym Equipment.

Phil Jackson and the staff at The Minack, all the Landlords and Landladies in the West Cornwall area who are "putting up with" over 40 tourists, and everyone who has helped make this production possible.

The Cast

Fraser Macdonald

Caretaker: *Elijah, Loony sailor*

Ian Brown

Security Guard: *Flask, Harpooner*

Charles Marriott

Groundsman: *Pierre, Ship's carpenter*

Cat Coe

Caterina Cutesy: *Ishmael, Narrator*

Alan Geeson

Security Guard: *Pip, Cabin Boy*

Kelly Bennett

Kalotta Braveman: *Queequeg, Southsea Cannibal*

Olivia Beckwith

Ophelia Belter: *Starbuck, Nantucket Quaker*

Fiona Robertson

Fenella Raunch: *Stubb, Second Mate*

Elaine Hartley

Eloisa Heaven: *Tashtego, Harpooner*

Lucy Thompson

Lucinda Taptoe: *Mary, Starbuck's wife*

Ciara Daly

Celina Dainty: *Company*

Anna Frost

Anastasia Friendly: *Company*

Colin Warnock

Music Master: *Father Mapple/Captain Gardiner*

Emily Smyth

Elsa Smolders: *Esta, Ahab's Wife*

Mark Curtis

Fifi Higginbottom: *Coffin, Harpooner*

Greg Elder

Natasha Danvers: *Daggoo, Harpooner*

Mary Holton

Mrs Mash: *Company*

David Elder

Headmistress: *Captain Ahab*

David Elder

Headmistress: *Captain Ahab*

The Elder family does have some form when it comes to whaling captains – David's great-grandfather (and so Greg's great-great grandfather!) was the captain of a Dundee whaling ship in the late 19th century, whose exploits included assisting Roald Amundsen in his discovery of the North-West Passage. His adventures were chronicled and performed by David's father, Michael, in a one-man play, *Whalers*, in the 1990s. Greg hopes that Ahab's madness is not a family character trait! David is getting used to portraying nautical captains for the Mitres, having played Don Pedro in *Gulliver's Travels* two years ago. Welcome to my school of fish – we want your money!!!

Anna Frost

Anastasia Friendly: *Company*

Anna has been involved in Mitre shows for the past 8 years but this is her first touring show and she is very excited to be taking part in this tour to the Minack. She is even more excited about the house she will be sharing in Cornwall with her St. Godley schoolmates! Anna is studying Drama at Kingston College and is also a Guide Leader for a local group. She hopes her girl guides will enjoy watching the show as much as she has enjoyed taking part in it!

Gregory Elder

Natasha Danvers: *Daggoo, Harpooner*

Gregory is a 17 year old currently studying for his A levels at The John Fisher School, Purley! Having torn his cartilage last December, he was forced to take up swimming thus allowing him to give Moby a run for his money! Daggoo is on the case! His great great etc grandfather was a whaler and has clearly passed down the skills needed!

Mark Curtis

Fifi Higginbottom: *Coffin, Harpooner*

Mark has fully embraced the spirit of the show by being very naughty-cal, this biog was due in over a week ago! He has always been a big fan of water. In fact, when he was a baby, the only way that his mum could stop him from crying was to plunge him into a vast vessel of water. Make of that what you will. Despite this, Mark has managed to make it to his second Minack show. The first, *The Hunting of the Snark* was also all at sea. Indeed he played the sea for which his costume was a skin tight leotard. Mark would like to take this opportunity to vow vengeance on the Helens Harman and Harries Rees for the afore-mentioned experience.

Cat Coe

Caterina Cutesy: *Ishmael, Narrator*

Cats generally don't like water, and this one is no exception. As a lifelong non-swimmer, she certainly wouldn't have lasted long in Ishmael's position. However, Cat has just completed her very own dangerous and turbulent adventure, also known as finishing her first year of teaching. She is very grateful that the school she teaches at is nothing like St Godley's! This is Cat's first Minack show, and she has been assured that there is no possibility of her falling off the stage and landing in the sea. Previous roles include *Sleeping Beauty* with The Mitre Players and Ado Annie in CODA's *Oklahoma*.

Ciara Daly

Celina Dainty: *Company*

This is Ciara's first Mitre production as an adult although she did appear in pantomime in the children's chorus when she was even younger than she is now. She is our youngest (and cutest) cast member and is thoroughly enjoying rehearsing this whale of a tale. She has appeared in school productions before but this is by far the most singing and dancing she has ever done – she has worked really hard and has improved greatly since she started at St Godleys – if she carries on like this she will soon be made senior prefect. She is currently studying for A levels.....

Behind the Scenes

Director

Julia Ascott

Stage Manager

Alan Collins

Publicity (Minack)

Lesley Bates

Musical Director

Colin Warnock

Backstage Assistants and Technical Crew

Lesley Bates

Matt Beal

Ollie Hall

Derek Lee

Val Lee

Alan Magrath

Julian Parsons

Charles Thomas

Photography

Marcus Ascott

Choreographer and Assistant Director

Helen Harman

Rehearsal Pianists

James Beal

Ian Rae

Colin Warnock

Design/Construction

Supervisor

Alan Collins

Programme

Alan Bishop

Anna Warnock

Lighting Designer

Alan Bishop

Properties

Liz Raishbrook

Box Office (Croydon)

Gill Frost

Special Effects

Andy Thompson

Assisted by

Liz Dolman

Box Office (Minack)

Katy Davies

Assisted by

Jon Lee

Scenic Artists and

Special Projects

Paul Bowles

Jill Wilson

FOH and Refreshments (Croydon)

Julia Gibbs

Alex Greenslade

Lorraine Price

and Friends of

The Mitre Players

Costume Co-ordinators

Di Jones

Anna Warnock

Tattoo Artist

Diana Dobson

Production Manager

Di Jones

FOH (Minack)

Enid Ghent

and members of

the touring party

Assisted by

Julia Ascott

Gillian Bartle

Diana Dobson

Liz Dolman

Gill Frost

Jo Gunner

Production Assistant And Prompt

Gillian Bartle

Moby Dick Artwork

James Beal

Tour Co Ordination

Alan Bishop

Anna Warnock

ACT ONE

The School Hymn	The Girls of St Godley's
Moby Dick	The Girls of St Godley's
I Live and Breathe	Ishmael and Company
In Old Nantucket	The Company
A Man Happens	Esta and The Whalers
Love Will Always	Pip and Ahab
Primitive	Queequeg, Ishmael and The Shrunken Heads
A Sinking Man	Pip, Esta, Ahab and The Ghosts
Jonah Fell	Father Mapple and Company
Pequod	Ahab, Queequeg and Company
At Sea One Day	Elijah and Company
Building America	The Company

20 MINUTE INTERVAL

ACT TWO

Moby Dick (Reprise)	The Company
Deck Dance	Pip, Flask and The Ship's Crew
Heave Away	Stubb, Starbuck and Crew
Can't Keep Out The Night	Ahab
Whale of a Tale	Starbuck and The Crew
Love Will Always (Reprise)	Starbuck and Ahab
The Rachel	Gardiner and Company
Shadows of the Deep	The Company
Bones	Queequeg
Heave Two	Ishmael, Ahab and Company
Moby Dick Finale	The Company

Olivia Beckwith

Ophelia Belter: *Starbuck, Natucket Quaker*

Trained at Italia Conti. Theatre credits: mum/sphinx in *Greek* (Riverside studios), Maenad in *The Bacchea* (Cockcroft theatre), speilweiser (Glastonbury Festival/ Stratford theatre), *Children of Eden* (Landor theatre), Angela in *Corpus* (Edinburgh festival), Doris in *Don Q* (Rose and Crown), lead roles in *The King and I* and *Annie Get your Gun* and pantomimes including Mrs Darling in *Peter Pan* with Gareth Hunt. Singing includes the Princes Palace in Monte Carlo, the Jazz Café in New York and The Royal Albert Hall. She is working with songwriter Mike Buck, bringing out her album "The Sweetest Thing" later this year.

TV includes *As If* (Channel 4), talk show with Tony Robinson (BBC 2), adverts for Lloyds TSB and the NHS, videos for The Discovery Channel and a silent movie for Forkbeard Fantasy productions.

Ian Brown

Security Guard: *Flask, Harpooner*

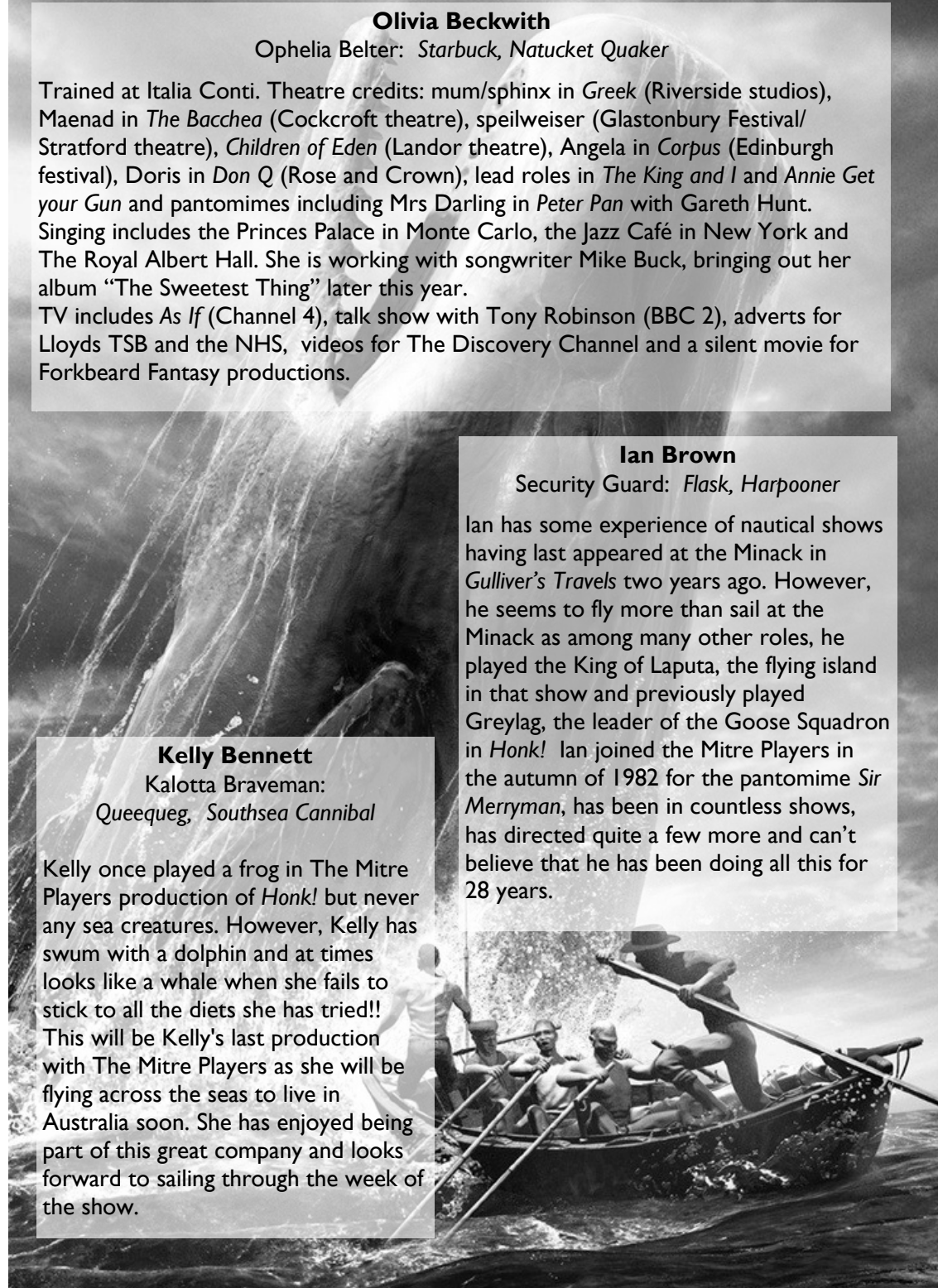
Ian has some experience of nautical shows having last appeared at the Minack in *Gulliver's Travels* two years ago. However, he seems to fly more than sail at the Minack as among many other roles, he played the King of Laputa, the flying island in that show and previously played Greylag, the leader of the Goose Squadron in *Honk!* Ian joined the Mitre Players in the autumn of 1982 for the pantomime *Sir Merryman*, has been in countless shows, has directed quite a few more and can't believe that he has been doing all this for 28 years.

Kelly Bennett

Kalotta Braveman:

Queequeg, Southsea Cannibal

Kelly once played a frog in The Mitre Players production of *Honk!* but never any sea creatures. However, Kelly has swum with a dolphin and at times looks like a whale when she fails to stick to all the diets she has tried!! This will be Kelly's last production with The Mitre Players as she will be flying across the seas to live in Australia soon. She has enjoyed being part of this great company and looks forward to sailing through the week of the show.



Julia Ascott

Director

This is Julia's seventh visit to the Minack with the Mitres; she has appeared on stage in four productions and directed the Minack Trophy winning production of *Honk!* in 2002 and the world premiere production of the new musical, *Gulliver's Travels* two years ago. She has really enjoyed doing another show with Helen and Colin and would like to thank them both for their hard work, enthusiasm and support. Her schooldays are sadly a distant memory but weren't nearly as much fun as life at St Godley's (as far as she can remember). She is glad she is not in the cast this time – it looks so exhausting. She seems drawn to productions with a nautical theme and hopes you will enjoy your ride on the high seas with the company of *Moby Dick!*



Helen Harman

Choreographer and Assistant Director



This is Helen's fourth Minack Production with the Mitres. Rehearsals for *Moby Dick* have gone swimmingly well and the company has risen to the challenges demanded of them. They have put every ounce of their energy into this intriguing piece and she applauds them all. Some of the cast this year are not only new to performing at the Minack, but new to performing on a stage and they have tackled the relentless musical numbers with a positive attitude. She would like to thank them all for throwing themselves into *Moby Dick* without giving her a hard time! She's made some wonderful

new friends and deepened relationships with friends she has worked with before, and this is what adds to the richness of the staging of this production this year. She has had a whale of a time and hopes you do too.

Colin Warnock

Musical Director, Mapple, Gardiner, Moby

Colin enjoyed acting and singing in a multitude of roles whilst he was a pupil at Trinity School and, as a direct result, he was a co-founder of The Mitre Players in 1973. Also through Trinity School, he spent many summers sailing on the Norfolk Broads with the Green Wyvern Yachting Club. So involvement with *Moby Dick* was almost inevitable! For 27 years, Colin has worked at the prestigious Laine Theatre Arts in Epsom, helping to train the stars of tomorrow.



THE BAND

Keyboards: James Beal, Ian Rae, Colin Warnock

Guitar: Jack Woods

Bass Guitar: Dave Price

Drums: Craig Backway

Additional Vocals: Katy Davies, Lorraine Price, Morven Rae

20 MINUTE INTERVAL

The Mitre Theatre

Refreshments are available in the Foyer -Drinks may be pre-ordered before the show

The Minack Theatre

Drinks and snacks are available from The Café (at the top of the theatre) or from The Coffee Shop (in the centre of the theatre)

The Minack Theatre and the entire **Trinity School** site - including the grounds are **NO SMOKING Sites**

The Minack Theatre is private property, all photographic, broadcasting, video and other reproduction rights are retained by the theatre.

Commercial photography is prohibited at all times. Flash photography is hazardous to the safety of the performers and is not permitted. Other photographs for private use may be taken, provided no disturbance is caused to the audience or actors.

In the interest of safety and comfort, members of the audience are requested:-

- Not to walk on the stage at any time & to keep to the paths & steps when in the theatre.
- To place all litter and especially cigarette ends in the bins provided
- To turn off all Mobile Phones, Pagers and Digital Alarms

Next Week at The Minack Theatre

WINCHESTER COLLEGE PLAYERS

Present

Love's Labour's Lost

by William Shakespeare

Monday 9th to Friday 13th August at 8.00 pm

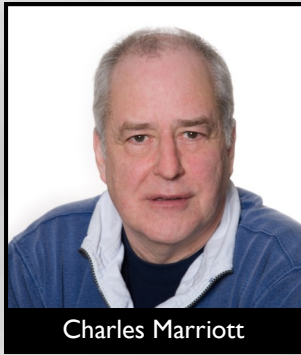
Wednesday and Friday Matinee at 2.00 pm

01736 810181 or www.minack.com or in person at The Box Office





Alan Geeson



Charles Marriott



Greg Elder



Kelly Bennett



Ian Brown



Mark Curtis



Ciara Daly



Fraser Macdonald



David Elder



Emily Smyth



Lucy Thompson



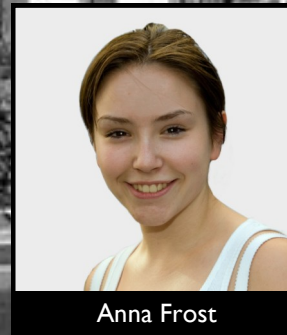
Cat Coe



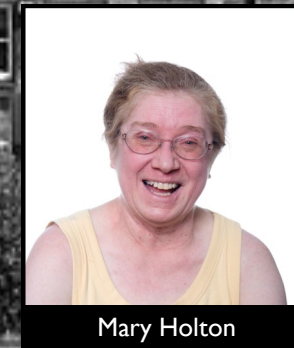
Elaine Hartley



Fiona Robertson



Anna Frost



Mary Holton



Olivia Beckwith