

# The Mitre Players

## OFFICIALS

**President** Mark Bishop

**Past Presidents** Chris Tarrant, Robin Wilson

**Vice-Presidents** Julia Ascott, Gillian Bartle, John Bartle,  
Alan Bishop, Martin Garnett, Warwick Jones, Peter Stockwell,  
Andrew Thompson, Martin Tyrrell, Anna Warnock, Colin Warnock

## CURRENT COMMITTEE

**Chairman** Andy Thompson

**Secretary** Kelly Beard

**Treasurer** Alan Bishop

**Additional Members** Ian Brown, Tanya Goody,  
Di Jones, Dave Price, Anna Warnock

## ADDITIONAL CONTACTS

**Box Office Hotline** 0845 2255799 (Local rate)

**Theatre Club Organiser** Colin Warnock

**Membership Secretary** Julia Ascott

**Newsletter Editor** Dave Price

The Mitre Players is the dramatic society of the Old Boys of Trinity School (The Old Mid Whitgiftian Association). We are a very friendly and sociable society, presenting 4 or 5 productions a year in a wide variety of venues, including an annual visit either to The Minack Theatre, Cornwall or The Shaftesbury Theatre, Dawlish.

Putting on a show not only requires people on stage, but also involves a great deal of hard work behind the scenes. We design, build and paint our own sets, find and make our own props, make many of our own costumes and use "in house" musicians whenever possible.

We welcome any new members, so if you have any aspirations to act, sing, dance or play a musical instrument, we would like to hear from you. If you

prefer to remain out of the spotlight, building scenery, lighting, painting, making costumes, making props, doing "Front of House" or simply would like to make tea for the team, we would still like to hear from you.

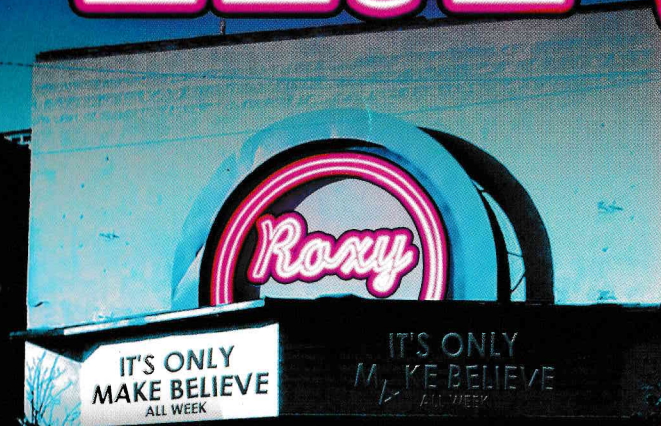
Most of our rehearsals take place at the Old Mid Whitgiftian Association Clubhouse in Sanderstead. The bar facilities at the clubhouse lend a social and convivial atmosphere to our rehearsals and all members are encouraged to use the facilities at Sanderstead as often as possible.

If you would like to join, or want more information, please contact our Membership Secretary: Julia Ascott on 020 8239 1010 or log on to our web site at:- [www.mitreplayers.org.uk](http://www.mitreplayers.org.uk)



present

IT'S ONLY  
**MAKE BELIEVE**



*July/August 2007*

# Chairman's Letter

We welcome you all to the Mitre Players summer touring show, **It's Only Make Believe**, which we are presenting both at our home base in Croydon and for our ninth visit to the Shaftesbury Theatre, Dawlish.

This is a new show, which incorporates many popular songs from several decades. Directed by Dave Price, this production has reminded some of us, who remember the original releases, just how old we are! We are also indebted to Jill 'Wiggy' Wilson for the superb set design, which has inspired us during the construction period!

We have had a busy year, with productions of **Cinderella Charleston!**, **Shakespeare4Kidz' Hamlet** and **Prime Time with Jean**, already under our belt. After **It's Only Make Believe**, we are having a short rest, before presenting a new version of **Sleeping Beauty**, at Christmas time.

Next year, we are performing Alan Ayckbourn's **A Chorus of Disapproval** at

Easter and during August are intending to tour once again to the Minack Theatre, Cornwall, with a brand new show written by Chris Chambers and Andy Rapps, based on **Gulliver's Travels**.

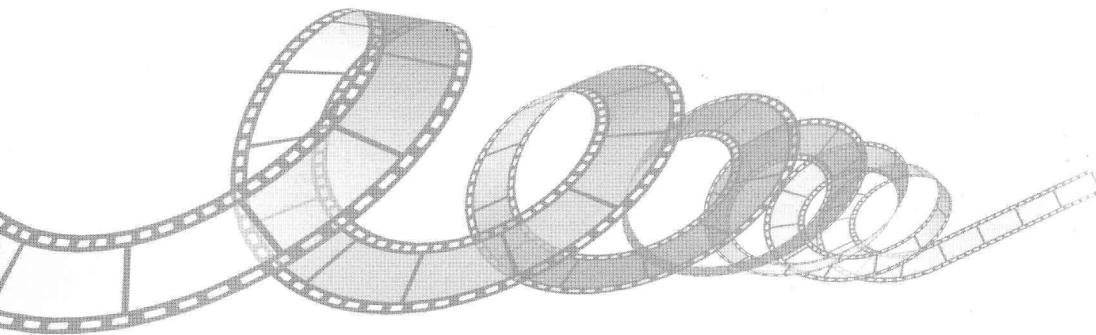
The Mitre Players are an amateur company and rely totally on the unpaid services of our members. To put on this many shows takes a lot of effort and I thank the many people involved, particularly those in organisational roles, who give up a lot of their spare time to further the Mitre's cause.

We try to vary the type of theatre we tackle as much as possible, providing interest for all tastes. We hope that you, our audiences, find tonight's show fun and the music makes your toes tap! We look forward to seeing you again at one of our future presentations.

Best wishes to you all.

*Andy Thompson.*

Chairman, The Mitre Players



## The Mitre Players would like to thank:

Mark Bishop, The Headmaster of Trinity School; Robin McKinlay and all the school staff; Bernard Jones, Marilyn Brimacombe, Iain, Liz and Michael Wedlake and all our friends at the Shaftesbury Theatre; Norman Glover at Tower Marketing; Barry Widecombe at The Ratcliffe School; Everyone else who has gone out of their way to help with this production.



Devised by John Plews Book by Chris Burgess

**Director**  
Dave Price

**Musical Directors**  
James Beal  
Colin Warnock

**Choreographer**  
Paul Cohen

**Designer**  
Jill Wilson

The Mitre Theatre, Trinity School, Croydon  
18th to 20th July 2007

Shaftesbury Theatre, Dawlish  
21st to 25th August 2007

*An amateur production, by arrangement with Ovation Theatres Ltd.*

### Please Note:

The Shaftesbury Theatre auditorium has been fitted with an Inductive Loop System. Members of the audience with hearing aids should set them to the "T" position.

Please remember to turn off all mobile phones and pagers.

Members of the audience are reminded that the use of photographic, recording or video equipment is not permitted and in the interest of safety and comfort, please note that smoking is not permitted in the building

Thank you for your co-operation.

# Director's Notes

Welcome to this Mitre Players' production of **It's Only Make Believe**. Would you believe it, but it's only by chance we're performing it at all! Wiggy, our designer went to see the original production of it in London and came back singing its praises and saying that it was just the sort of show we could do. 'Well', we thought, 'we'd better have a look!' So, we begged, borrowed or stole - I must confess, I can't remember which - a copy of the script and lo and behold, we thought 'this is just the sort of show we could do!' A quick chat with the writers John Plews and Chris Burgess later, and the rights were duly granted and here we are! Well not quite...a huge amount of work from a lot of people has gone into this production. I'd like to thank everyone who's helped out; it really has been a group effort of the best possible kind.

Rehearsals have been tremendous and full of energy. Taking the songs and giving each a distinctive feel has been a challenge but one it's been enormously entertaining rising to. It's also been great fun bringing all the different characters to life, especially the movie

stars. I'm sure you recognise them all, but I hope we've rekindled a few happy memories from the golden age of cinema.

**It's Only Make Believe** is set in a derelict cinema and if you're watching this show in Dawlish, the building you're sitting in - hopefully enjoying the show! - was brought back to life in a very similar way and has recently seen even more refurbishments which are a testament to the dedicated work of The Dawlish Repertory Company. This is the fifth Mitre production I've been involved with in Dawlish and it's always a pleasure to be here.

If you're watching this show at Trinity School, I've been involved with a good few more here and the old place is going to have to put up with me teaching in it now on top of everything else! So, sit back and relax and enjoy an evening of good, old time movie magic liberally laced with some of your favourite songs. I hope you enjoy the show; we've all had terrific fun bringing it to you.

*Dave Price*, Director.

## A Brief history of The Shaftesbury Theatre.

The Dawlish Repertory Company, an amateur society, was formed in 1949 by a small group of enthusiasts who met while attending a series of evening classes. The first production of three one act plays took place in May 1950 at the local secondary school. Over the next three years a total of 14 plays were staged at the school and productions then moved to The Hut, a local public hall. Having produced 26 successful plays at this venue the Company was forced to look elsewhere when it was announced that the building was to be

demolished. The only suitable building in Dawlish was The Shaftesbury Hall, which was on the market for £2,500 and it was estimated that it would cost a further £1,000 to convert the building into a theatre. Although the Rep at that time had a mere £40 to their name, the committee took the brave decision to purchase the building.

The building was constructed in 1881 and had been used for meetings and a variety

# It's Only Make Believe

Devised by John Plews,

Book by Chris Burgess

## John Plews

John trained on the technical course at LAMDA and then spent several years in Rep, including a long stay at the Theatre Royal, Windsor. He has directed and produced numerous shows, including many for cruise lines Princess, Cunard and P&O. John is now Artistic Director at *Upstairs at the Gatehouse*, a 130 seat fringe theatre in Highgate. At the Gatehouse, John has directed **Forever Plaid** (also Edinburgh and National Tour), **From a Jack to a King, A Slice of Saturday Night**, **Little Shop of Horrors**, **Return to the Forbidden Planet**, **Hot Mikado**, **The Wiz** and **It's Only Make Believe**.

The idea for **It's Only Make Believe** came from Woody Allen's film **The Purple Rose of Cairo**. The inspiration came from Bob Carlton's Olivier Award winning musical **Return to the Forbidden Planet** - which gave credibility to the genre we now know as the 'Juke Box Musical'. Rather than use the music of just one era or one artist, **It's Only Make Believe** hand picks tunes of the last sixty years to tell the story of Brad Maguire and the Roxy cinema.

John, together with his wife Katie, run their company, Ovation, from the Gatehouse. They produce corporate events as well as theatre shows. Further information can be found at [www.ovation.eu](http://www.ovation.eu)

of social gatherings. It was once owned by the Christian Alliance for Women and Girls before becoming privately owned. During this time it continued to be used by the local community for a variety of social functions.

The Shaftesbury Theatre was finally opened in September 1959. The stage area measured approximately 19 feet by 19 feet and at that time there was a seating capacity of 147. In 1967 the company purchased the cottage at the rear of the theatre, providing additional space both backstage and in the public areas of the theatre.

## Chris Burgess

Theatre writing credits include: **Girls Who Wear Glasses**, a jazz cabaret (National tour), **Dishonorable Ladies**, a one woman show for Honor Blackman, (National tour, and West End); book and lyrics for **Tales My Lover Told Me** (King's Head Theatre, Islington); book and lyrics for **The Last Fattybottypuss in the World** (Regent's Park Open Air Theatre).

He also wrote a show based on the life of Sophie Tucker; **Sophie Tucker's One Night Stand** (New End Theatre, Hampstead and the King's Head Theatre, Islington).

Chris is currently writing a musical entitled **Boys in the Buff**. Starring Faith Brown, the show premieres at the 2007 Edinburgh Festival Fringe.

His TV writing credits include episodes of the Carlton soap opera **London Bridge**, Channel TV's **Island Life**, Channel 5's teen serial **Risk**, and the BBC's **Doctors**. His radio writing credits include a five part drama serial for Radio 4, **The Invincible Viole** starring Sylvia Syms, broadcast in July 2004.

Chris is married to actress Sue Kelvin and lives with their two children in North London.

As with any old building there have been countless expenses over the years and the company has been responsible for major repairs and improvements to the building. Since the major alterations carried out in 2004/2005 as Phase I of *The Shaftesbury Quest*, the seating capacity of the theatre is now 141. Phase II continues and includes the new foyer, toilets and box office, which you can see tonight.

Each year Dawlish Repertory Company stages 5 plays plus a pantomime and the season runs from October to September.

## THE CAST

<b>Carol</b>	Kelly Beard
<b>Bev</b>	Tanya Goody
<b>Kevin</b>	Jolyon Roberts
<b>Andy</b>	Paul Bowles
<b>Gran</b>	Julia Ascott
<b>Donna Deecup</b>	Lorraine Price
<b>Brad Maguire</b>	Sam Cook
<b>Frankie de Chino</b>	Colin Warnock
<b>Lola Del Monte</b>	Emily Grogan
<b>Harold C. Jenkins</b>	Paul Bowles
<b>Bailiff</b>	Paul Bowles
<b>Site Workers</b>	Di Jones, Georgina Roberts, Alex Ryall

### ACT ONE

Big Time Operator  
Oh Carol  
The Great Pretender  
My First, My Last, My Everything  
Mack the Knife  
Sway  
Lola  
All Shook up  
When Will I See You Again  
Why Do Fools Fall in Love

INTERVAL (20 minutes)

### ACT TWO

Come Back My Love  
Never Can Say Goodbye  
Money  
I Wanna Be Loved By You  
It's Only Make Believe  
As Time Goes By  
My Boyfriend's Back  
Knock on Wood  
Rockin' All Over The World

*The action takes place in the Roxy Cinema, somewhere in London,  
during the late 1970s*

## THE BACKSTAGE TEAM

<b>Director</b>	Dave Price
<b>Assistant Director</b>	Di Jones
<b>Musical Directors</b>	James Beal, Colin Warnock
<b>Choreographer</b>	Paul Cohen
<b>Assistant Choreographers</b>	Julia Ascott, Kelly Beard Di Jones, Lorraine Price
<b>Designer</b>	Jill Wilson
<b>Stage Managers</b>	Gillian Bartle, Alan Collins
<b>Lighting Designer</b>	Alan Bishop
<b>Sound</b>	James McLeod
<b>Costumes</b>	Anna Warnock
<b>Special Effects</b>	Andrew Thompson
<b>Props</b>	Mary Holton
<b>Production Manager</b>	Kelly Beard
<b>Backstage Assistance</b>	Oliver Ascott, Ransi Bandara, Lesley Bates, Matt Beal, Mark Bruggemann, Liz Dolman, Derek Lee, Sue Marr, Julian Parsons, Charles Thomas and members of the cast
<b>Musical Arrangements</b>	Colin Warnock
<b>Handbill Design</b>	James Beal
<b>Programme</b>	Alan Bishop
<b>Photography</b>	Charles Marriott
<b>Box Office (Croydon)</b>	Gill Frost
<b>Box Office (Dawlish)</b>	John Bartle, Marilyn Brimacombe
<b>Front of House and Refreshments</b>	Carolyn Backway, Alex Greenslade, Fiona Lilley and Friends of The Mitre Players
<b>Publicity (Dawlish)</b>	Lesley Bates
<b>Tour Co-ordination</b>	Alan Bishop, Anna Warnock

## THE BAND

<b>Keyboards</b>	James Beal
<b>Guitar</b>	Mark Goody
<b>Bass</b>	Dave Price
<b>Drums (Croydon)</b>	Craig Backway
<b>Drums (Dawlish)</b>	Charles Marriott
<b>Trumpet</b>	Pat Price
<b>Alto Sax (Croydon)</b>	Laura Parker



**JULIA ASCOTT**  
Gran

**JULIA** is a veteran of the Mitre Players having been a member since 1974, when she was the youngest member of the pantomime cast. She therefore feels it is appropriate that almost 30 years later she is playing Gran and is happy to be one of the oldest cast members. The years in between have seen her perform in, direct or choreograph almost 100 different productions. However, this is only the second time she has performed in Dawlish. Secretly, she would have liked to be a film star in the black and white movie era or do voice-overs for animated children's films...but performing with the Mitres is a good substitute



**JAMES BEAL**  
Musical Director

Since **JAMES'** last Mitre Players programme write-up as MD of **Sir Merryman**, he has done his very best to avoid having to come to any rehearsals by only joining us to play in the bands for **Just So** and **Cinderella Charleston!** Elsewhere, he has been busy Musical Directing **Bugsy Malone** and **Return to the Forbidden Planet**, before jumping on the Shakespeare 4 Kidz bandwagon as MD for the Spring 2007 leg of their UK and International tour – a whirlwind of glamour and showbiz which took him to such exotic locales as Dubai, Sharjah and Grimsby. Upcoming projects include **Copacabana** for Oxted Operatic Society and the design and development of the all-new Mitre Players website at [www.mitreplayers.org.uk](http://www.mitreplayers.org.uk). Jimbo's favourite film is **Back to the Future II**, perhaps he believes it will allow him to get to rehearsals BEFORE getting out of bed.



**KELLY BEARD**  
Carol

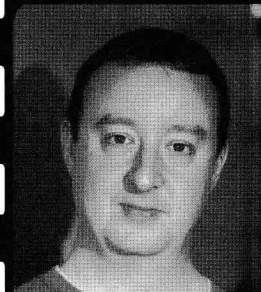
**KELLY** has not played a lead role for over two years now having been busy looking after her beautiful son Joseph. She has missed being on stage and has really enjoyed being part of this production, although learning all the lines has been tough. Kelly would love to play Scarlett O'Hara and get the chance to wear all of those fabulous dresses. Speaking of fabulous dresses, Kelly is getting to wear one in October when she marries her gorgeous fiancé Andrew. If you're not really interested "Frankly my dears, I don't give a ....."



**PAUL BOWLES**  
Andy, Harold, Bailiff

"A long time ago in a galaxy far, far away..." (Oh Ok, Westerham, Kent) **PAUL** dusted off his tap shoes. Unfortunately for us, they are not magical. Paul was last with the Mitre Players on the production team of **The Hunting of the Snark** as Designer. He has also designed and helped construct other sets for the Mitre Players, including **Peggy for You, Beauty and the Beast** and **Peter Pan** He has appeared on stage in the productions of **The Madness of George III**, **Honk!** and **The Long and the Short and the Tall**. Paul has been looking forward to being in another production with the Mitre Players and visiting Dawlish. This time, he's not just a groupie. He says that he has enjoyed all the hard work that goes into a show. Stupid is what Stupid does.

Having just finished choreographing CODA's successful production of **Seussical** at The Miller Centre, **PAUL** had decided to take a bit of a break before starting rehearsals for the next show. However, it didn't take too much persuasion for him to agree to choreograph several numbers in this one, and he is delighted to be back with the Mitres once again. Paul's favourite movies are the **Star Wars** films of which he has been a fan since he was a child. Enjoy the show and may the force be with you.



**PAUL COHEN**  
Choreographer

**SAM** has been a member of the Mitre Players for many years now and his most memorable shows include **Just So**, **Robinson Crusoe** and **Little Shop of Horrors**. He is very excited to be involved in this show and can't wait for Dawlish! If Sam was a film star, he'd most like to be Johnny Depp because he gets all the best roles.



**SAM COOK**  
Brad Maguire

**TANYA's** favourite film is **Top Gun**. Aside from the amazing flight sequences and the story of love and loss, her main reason for choosing this film is the volleyball scene – what girl could disagree?! Previous shows with the Mitres include **House and Garden**, **Abigail's Party**, **Godspell** and various appearances in panto. This will be Tanya's last show with the Mitres as she is moving to start a new job in Northampton but has some parting words for you all.....Tom Cruise's bum in white trousers!!!



**TANYA GOODY**  
Bev

Having played a cockney urchin, American tart, English governess, Australian dingo dog and most recently a Scottish school girl, **EMILY** now finds herself playing the part of a Spanish flamenco dancer. Emily has thoroughly enjoyed all the rehearsals, especially the dance ones, as she has finally had an excuse to shake her hips and get down and boogie! She would like to thank Penelope Cruz for all her help with mastering an Iberian accent, whilst listening to Antonio strum his mandolin under a vanilla sky!



**EMILY GROGAN**  
Lola del Monte



**DI JONES**  
Assistant Director

Although **DI** has been associated with the Mitres since the early 80s, this is her first 'tour' to Dawlish. Having been a 'hooper' since she was three years old, she has enjoyed creating the tap routine for this show. She has to confess that she remembers all the songs featured in the show and recognises all the 70's dresses as well! She is addicted to musicals on the big screen and can perform all the dialogue, songs and dance routines from her favourite film **Singing in the Rain**; her heroes are Gene Kelly and Donald O'Connor, who are the best hoofers ever!



**DAVE PRICE**  
Director

**DAVE** cut his directorial teeth on a couple of pantos (**Beauty and the Beast** and **Peter Pan**) and his favourite play (**The Long, and the Short and the Tall**). However, **It's Only Make Believe** is his first foray into musicals. He'd be the first to admit that the choreographers and musical director do most of the work, but he likes to think he's been at least holding the reins. No fan of shaving, he'd most like to be Clint Eastwood's character in **The Good, the Bad and the Ugly**. Not so much "The man with no name" and more the "The man with no mane", Dave has directed **It's Only Make Believe** like a true cowboy! You can decide whether that's a good, bad or ugly!



**LORRAINE PRICE**  
Donna Deecup

**LORRAINE** is thrilled to be playing this part as she has never before played: a dizzy blonde!! If Lorraine could choose to be any film star, she would like to be Judy Garland in the **Wizard of Oz**. She gets to go to the land of Oz, has a dog called Toto, meets a talking scarecrow, tin man and lion and gets to call the annoying woman up the road a wicked old witch. Oh...and she gets to crush a real life witch with a flying house! There can be no other choice! It is her favourite film and she can't believe her husband has never seen it.



**GEORGINA ROBERTS**  
Site Worker

This is **GEORGINA's** first Mitre Players performance and she is pleased to be treading the boards after 'resting' for some time, although the complicated dance routines and very necessary extra tap dancing lessons have been something of a shock to the system! Her favourite films are **Dangerous Liaisons** and **Trains, Planes and Automobiles** - the former for romance and the latter because it's never-not-funny. Her favourite actress is Uma Thurman, but when Georgina is wearing her boiler suit (which is most of the production) fans of the Tarantino Movie **Kill Bill** may not spot any similarity!

More Vince Vaughan than Brad Pitt, **JOLYON** plays Kevin in this production – another "character" part. His impact on stage can be measured by the fact that he was recently chatting to a colleague from work who had seen 6 productions that Jolyon had been in and had no recollection whatsoever of his participation. Unfortunately this anecdote is not fabricated like so many of Jolyon's past biogs. His favourite movie actors are Steven Seagal (for his emotional range) and Julia Roberts for well....just being Julia Roberts. Audience members will as be surprised as everyone else to learn that she is not his sister.



**JOLYON ROBERTS**  
Kevin

This is **ALEX's** first show with the Mitres and her first 'tour' to Dawlish. Having just finished her A levels, she has had to learn all the songs and dance routines in record time! She is the youngest member of the cast and is looking forward to her 18<sup>th</sup> birthday, just two days after her final performance in Dawlish. She is mad on musicals and can sing all the songs in **The Sound of Music**, which is her favourite film. Not surprisingly, her film heroine is Julia Andrews.



**ALEX RYALL**  
Site Worker

**COLIN** was born, raised and educated in Croydon, Surrey. On leaving Trinity School in 1972, he co-founded The Mitre Players and has been involved ever since. Previous Dawlish appearances include The Butler in **Something's Afoot** (he was the first to die!) Prospero in **Return To The Forbidden Planet**, Charley in **Merrily We Roll Along**, Emcee in **Cabaret** and The Mikado in **The Mikado**, plus several shows as Musical Director. Colin prefers the theatre to the cinema, but his favourite film has to be **The Sound Of Music** – not sure about portraying Julie Andrews though! Since 1983, he has worked at the prestigious Laine Theatre Arts College for the Performing Arts in Epsom, Surrey, helping to train the stars of tomorrow.



**COLIN WARNOCK**  
Frankie de Chino

