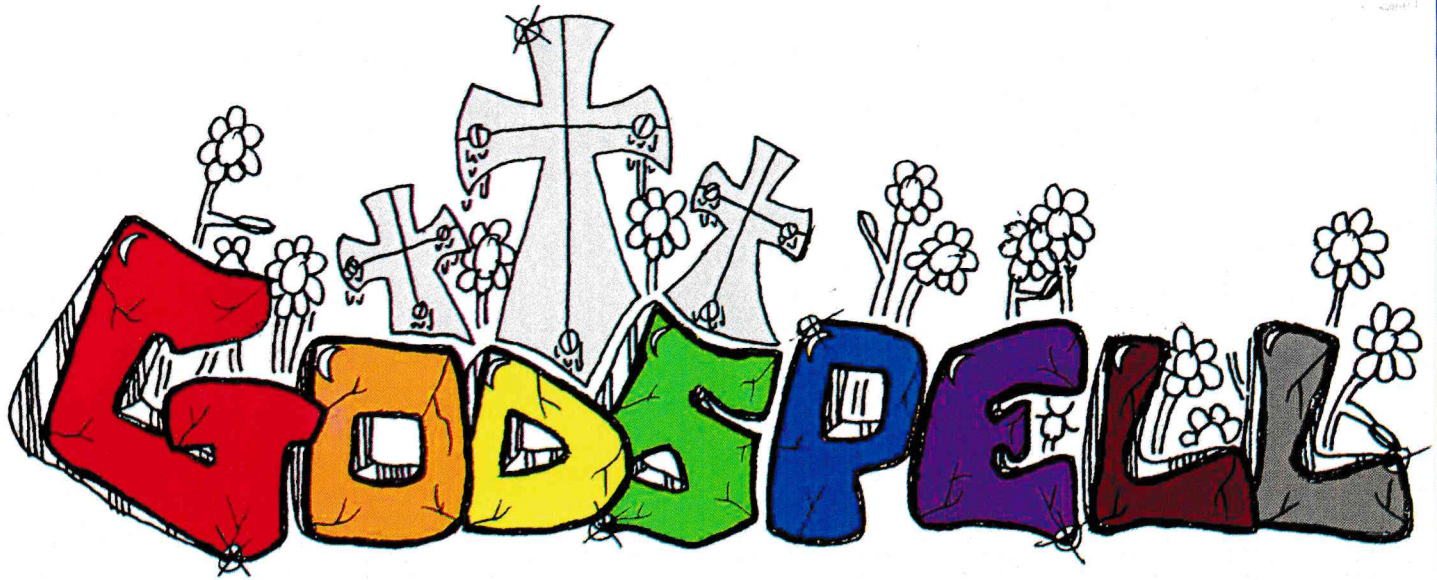


# THE MITRE PLAYERS



AUGUST 2003

# CHAIRMAN'S LETTER

We welcome you all to the Mitre Players 30<sup>th</sup> Anniversary year summer touring show, 'Godspell', which we are presenting both at our home base in Croydon and for our sixth visit to the Shaftesbury Theatre, Dawlish.

This is the second time we have taken this show on tour, having presented it in 1990 in Falmouth. This new production, directed by Ann Bowden, has given us the opportunity to use the talents of many of our younger members.

We have had a busy 30<sup>th</sup> Anniversary year, with productions of 'Beauty and the Beast', 'Peggy for You' and 'Romeo and Juliet' already under our belt. After 'Godspell' we are presenting 'The Madness of George III', making five shows during this year!

Our calendar is also mapped out for next year, with 'Peter Pan' being our January production and 'Little Shop of Horrors' our Easter Junior Show. We will be taking Mike Batt's musical 'The Hunting of the Snark' to the Minack Theatre, Cornwall, during August for its amateur world premiere and first showing since its West End debut in the early nineties. We are honoured

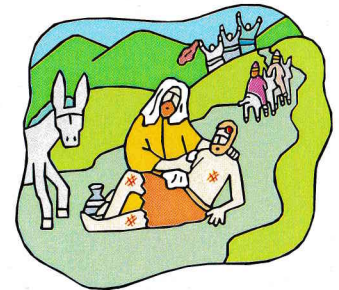
to be able to do this. Finally we shall be producing 'Stepping Out' in Oct 2004.

The Mitre Players are an amateur company and rely totally on the unpaid services of our members. To put on this many shows takes a lot of effort and I thank the many people involved, particularly those in organisational roles, who give up a lot of their spare time to further the Mitres' cause.

We try to vary the type of theatre we tackle as much as possible, providing interest for all tastes. We hope that you, our audience, find tonight's show to your liking, and look forward to seeing you again at one of our future presentations.

Best wishes to you all.

Andy Thompson.  
Chairman.



# THE MITRE PLAYERS

The Dramatic Section of the Old Boys' Association of Trinity School

Present

# GODSPELL

**Conceived & originally directed by John-Michael Tebelak.  
Music & new lyrics by Stephen Schwartz.**

Lyrics to "By my Side" by Jay Hamburger  
Music to "By my Side" by Peggy Gordon

**Director and Choreographer: Ann Bowden  
Musical Director: Colin Warnock**

**The Mitre Theatre, Croydon 7th to 9th August 2003  
Shaftesbury Theatre, Dawlish 18th to 22nd August 2003**

**Originally produced on the New York Stage by Edgar Lansbury/Stuart Duncan/Joseph Beruh**

**An amateur production, by arrangement with Samuel French Limited**

# THE MITRE PLAYERS

## OFFICIALS

**President:** Chris Tarrant **Past President:** Robin Wilson  
**Vice-Presidents:** Julia Ascott, Gillian Bartle, John Bartle, Alan Bishop, Martin Garnett, Jack Griffin, Warwick Jones, Peter Stockwell, Martin Tyrrell, Anna Warnock, Colin Warnock

## CURRENT COMMITTEE

**Chairman** Andy Thompson  
**Secretary** Julia Gibbs  
**Treasurer** Alan Bishop

**Additional Members:** Kelly Beard, Ian Brown, Keith O’Gorman, Dave Price, Morven Rae

## ADDITIONAL CONTACTS

**Box Office Manager** Sheila Garnett  
**Theatre Club Organiser** Colin Warnock  
**Membership Secretary** Julia Ascott

The Mitre Players is the dramatic society of the Old Boys of Trinity School (The Old Mid Whitgiftian Association). We are a very friendly and sociable society, presenting 4 or 5 productions a year in a wide variety of venues. Putting on a show not only requires people on stage, but also involves a great deal of hard work behind the scenes. We design, build and paint our own sets, find and make our own props, make many of our own costumes and use “in house” musicians whenever possible.

We would welcome any new members, so if you have any aspirations to act, sing, dance or play a musical instrument, we would like to hear from you. If you prefer

to remain out of the spotlight, building scenery, lighting, painting, making costumes, making props, doing “Front of House” or simply would like to make tea for the team, we would still like to hear from you.

Most of our rehearsals take place at the Old Mid Whitgiftian Association Clubhouse in Sanderstead. There, the bar facilities lend a social and convivial atmosphere to our rehearsals and all members are encouraged to use the facilities at Sanderstead as often as possible.

If you would like more information, please call our Membership Secretary: Julia Ascott on 020 8239 1010 or log on to: [www.mitreplayers.org.uk](http://www.mitreplayers.org.uk)

## OUR PREVIOUS TOURING PRODUCTIONS

1987	Two Gentlemen of Verona	Falmouth Arts Theatre
1988	Guys and Dolls	Falmouth Arts Theatre
1989	Something's Afoot	St Margarets, Dover
1989	Chicago	Falmouth Arts Theatre
1990	Godspell	Falmouth Arts Theatre
1991	Roar of the Greasepaint	Falmouth Arts Theatre
1992	The Wizard of Oz	Minack Theatre, Porthcurno
1993	Cabaret	Shaftesbury Theatre, Dawlish
1994	Man of La Mancha	Minack Theatre, Porthcurno
1995	Little Shop of Horrors	Shaftesbury Theatre, Dawlish
1996	The Mikado, Revamped	Shaftesbury Theatre, Dawlish
1997	Quasimodo	Minack Theatre, Porthcurno
1998	Merrily We Roll Along	Shaftesbury Theatre, Dawlish
1999	The Boyfriend	Shaftesbury Theatre, Dawlish
2000	The Country Wife	Minack Theatre, Porthcurno
2001	Return to the Forbidden Planet	Shaftesbury Theatre, Dawlish
2002	Honk! The Ugly Duckling	Minack Theatre, Porthcurno

### THE MITRE PLAYERS WOULD LIKE TO THANK

The Governors and Headmaster of Trinity School for allowing us to perform **Godspell** in the Mitre Theatre; Eyre Maunsell, John Bertram and team for their invaluable help; Liz and Michael Wedlake and all our friends at the Shaftesbury Theatre, Dawlish; Norman Glover at Tower Marketing; Barry Widecombe at The Ratcliffe School and Lance Milton.

# GODSPELL

**Godspell**, conceived by John-Michael Tebelak as a jubilant celebration of the Gospel according to St. Matthew, started out in the form of a workshop by a small group of actors in New York and was first performed there on 17 May 1971 at The Cherry Lane Theatre with a cast of 10. It ran for over 2,500 performances and was the first hit musical for lyricist and composer, Stephen Schwartz. Later the same year it also opened in London and launched the careers of David Essex, Julie Covington, Marti Webb, Jeremy Irons and Robert Lindsay.

Stephen Schwartz has since written many more musicals with varying degrees of success including **Pippin** (1972), **The Baker's Wife** (1976) and **Children of Eden** (1991). He has also collaborated with Alan Menken on **Pocahontas** (1995) and **The Hunchback of Notre Dame** (1996) for Walt Disney.

Although quite often performed by amateur groups with much larger casts, I have always felt I would prefer to use a small cast in order to keep the "close community" feel of the show and so I am grateful to Mitre Players for allowing me to stage the show with just 12 actors.

**Godspell** is a challenging show to direct and the outcome of each production depends very much on the individual thoughts and intentions of the Director concerned. Also, its success depends largely on the talent and dedication of the cast members who need the high energy to cope with the exuberant demands of Act 1 plus the ability to handle the sadness and emotion of Act 2. I have been blessed with a truly talented and dedicated cast.

I first saw **Godspell** in 1985, when my daughter Dawn appeared in an exciting revival of the show, starring Davy Jones (of "The Monkees" fame). I saw the show several times as it toured all around the UK, ending in a season at The Fortune Theatre, London and it never failed to entertain and move me deeply. Since then I have always longed to direct **Godspell** and I am grateful to Dawn for the help and support she has given me in directing this production.

Ann Bowden,

Director and Choreographer.

## ANN BOWDEN (Director and Choreographer)



Having played well over 100 principal roles and directed many productions, including **The Mikado (revamped)** which was performed

in Dawlish in 1996, Ann has at last fulfilled her long-held ambition to direct **Godspell**, one of her favourite musicals. She is very grateful for the hard work and dedication of her talented cast and the invaluable support of the Mitre Players' production, technical and stage-management teams. Her sincere thanks also go to the Musical Director, Colin Warnock and the Production Manager, Lorraine Titchener. Last seen here in Dawlish playing the part of Madame Dubonnet in **The Boyfriend**, Ann is delighted to be back!

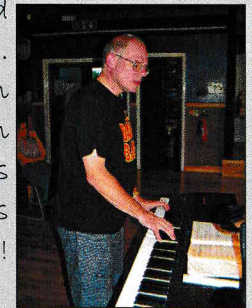


## COLIN WARNOCK (Musical Director)

A founder member of the Mitre Players in 1973,

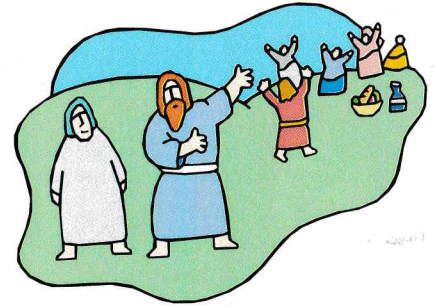
Colin is a professional musician and teaches at Laine Theatre Arts college for the performing arts in Epsom, Surrey. Previous roles in Dawlish include Emcee (**Cabaret**), Charlie (**Merrily We Roll Along**), **The Mikado (The Mikado)** and Lord Brockhurst (**The Boyfriend**). This is the sixth production of **Godspell** which Colin has

musically directed over a period of 22 years. Having been M.D. for **Jesus Christ Superstar** in May and watched a production of **Joseph** last month, he feels that his religious education is now almost complete!



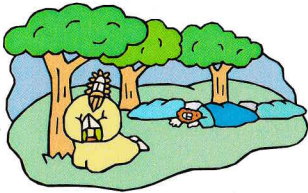
## THE CAST

Kelly Beard	Alex Greenslade
Robert Critchett	Jolyon Roberts
Mark Curtis	Tanya Smith
Katy Davies	James Smoker
Clare Dempsey	Lorraine Titchener
Paul Grace	Nicholas Uglow



## THE BAND

Colin Warnock	Keyboards
Patrick Moore	Guitars
Dave Price	Bass Guitar
Craig Backway	Drums



### Please Note:

The Shaftesbury Theatre auditorium has been fitted with an Inductive Loop System. Members of the audience with hearing aids should set them to the "T" position.

Please remember to turn off all Mobile Phones and Pagers.

Members of the audience are reminded that the use of Photographic, Recording or Video equipment is not permitted and in the interest of safety and comfort, please note that smoking is not permitted in the auditorium. Thank you for your co-operation.



## ACT ONE

Tower of Babble

The Company

Prepare Ye The Way of the Lord

Jolyon and Company

Save the People

James and Company

Day by Day

Kelly and Company

Learn your Lessons Well

Tanya

Bless the Lord

Katy and Company

All for the Best

James and Jolyon

All Good Gifts

Paul and Company

Light of the World

The Company

### 20 Minute Interval

Drinks and coffee will be available in the Foyer/Bar.  
Interval drinks may be ordered from the bar  
before the performance.

## ACT TWO

Learn your Lessons Well (Reprise)

Alex

Turn Back, O Man

Lorraine, James and Company

Alas for You

James

By my Side

Clare, Tanya and Company

Beautiful City

Mark and Company

We Beseech Thee

Nick and Company

Day by Day (Reprise)

The Company

On the Willows

The Band

Finale

The Company

# BEHIND THE SCENES

## DIRECTOR AND CHOREOGRAPHER

Ann Bowden

## MUSICAL DIRECTOR

Colin Warnock

## ASSISTANT CHOREOGRAPHERS

Clare Dempsey

Lorraine Titchener

## STAGE MANAGER

Gillian Bartle

## LIGHTING DESIGN

Alan Bishop

## SOUND DESIGN

Michael Clark

## PROPERTIES

Sue Carter

Andy Holton

Mary Holton

## PRODUCTION MANAGER

Lorraine Titchener

## BACKSTAGE, CONSTRUCTION AND TECHNICAL TEAM

Gillian Bartle

Alan Bishop

Sue Carter

Michael Clark

Alan Collins

Diana Dobson

James McLeod

Julian Parsons

Dave Richards

Jan Richards

Adam Tibbalds

Andy Thompson

Anna Warnock

Ben Warnock

## REHEARSAL PIANISTS

Keith O'Gorman

Colin Warnock

## GODSPELL LOGO DESIGN

Ben Warnock

## PUBLICITY

Lesley Bates

## PROGRAMME

Alan Bishop

Anna Warnock

## PHOTOGRAPHY

Charles Marriott

## BOX OFFICE (CROYDON)

Sheila Garnett

## BOX OFFICE (DAWLISH)

Marilyn Brimacombe

Mary Holton

FRONT OF HOUSE (CROYDON)  
Martin Garnett and Friends of  
The Mitre Players

## FRONT OF HOUSE (DAWLISH)

John Bartle

Ian Brown

and members of the Dawlish  
Repertory Company

## TOUR ACCOUNTANTS

John Bartle

Kelly Beard

## KELLY BEARD

Kelly has been preparing for her role on a 'day by day' basis and has enjoyed playing a pig, whore, devil and gibbon but wait till you see her racoon! Kelly has 'blessed the Lord' for being a Mitre Player for over 10 years and 'prepare ye' for many years to come. One of her favourite pastimes is confusing the cast by re-writing lyrics to show songs - and there have been many interesting ones during this show. The reason why

Kelly has so much time on her hands is because she is a teacher and therefore has extremely long holidays!



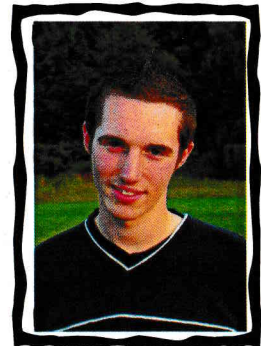
## ROBERT CRITCHETT

Robert joined the Mitre Players in 1996 but two years later realised how bad he was and gave drama a break to concentrate on playing soldiers. This year he could resist the lure of the Mitres no longer and, we're sure you'll agree, has made a triumphant return! When not performing or playing with his weapon, he can usually be found in his garden with his exotic cacti!



## MARK CURTIS

Having just finished studying Luke's Gospel for his RS A-Level, Mark has suddenly found himself full of confusion and miscomprehension. However, those who know Mark will be quick to tell you that this is exactly how Mark always feels. He is pleased to be able to sing about his hometown, Croydon, in the show, using it to mould the idea of a utopia in 'Beautiful City'.



## KATY DAVIES

Godspell is Katy's first show with the Mitres, but her fourth Godspell (and yes she is getting professional help for her addiction). She is grateful to have the opportunity to play an angel.....and less so, a whore, pig, dog and goat! Katy can next be seen in *Jesus Christ Superstar* and is on the lookout for any other musicals based on the gospels! In her spare time Katy is a doctor!



## CLARE DEMPSEY

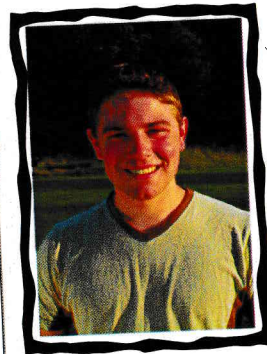
This is Clare's second production of *Godspell* in the space of a month having just taken part in it at The Theatre



(*Leatherhead*) as her graduation show from her HND Musical Theatre Course. As she's playing a different character this time Clare hopes that she doesn't get confused this evening as to which part she's playing. She's also worried that she might end up singing some alternative lyrics to *By My Side* (created by other members of the cast during a lull in the rehearsal period)!

## PAUL GRACE

This is Paul's second *Godspell*, having been in the Trinity School production in 1998 under the musical direction of one Colin Warnock! Back then he played the recorder part in 'All Good Gifts' and this time round he's delighted that Colin is letting him sing the words. Paul is currently studying for a BA in Theatre, Film and Television at St' John College, York. He has recently been in Germany taking part in the Trans-Europe Festival



2003 and only just made it back in time for rehearsals for this show! Oh, to be in such demand

## ALEX GREENSLADE

When Alex got this part, he realised that he was twice as old as the youngest cast members, but was comforted by the knowledge that the Director is twice as old as him! (??) He joined the Mitres directly on leaving Trinity School and his parts have frequently had a linguistic dimension (he speaks German and French). Alex runs a business that helps flat owners buy their freehold.



## JOLYON ROBERTS

This is Jolyon's second role for the Mitre Players and the two could not really be more different. Having put a lot of thought into preparing an audition piece that demonstrated his gravitas and qualities of pathos, he was cast as the Dame in his first production (*Beauty and the Beast*) at Christmas. He has enjoyed the preparation for the part of Judas, having played dishonourable roles for other companies, and has found it much easier to create a moody persona when not in drag. He has vowed that his next part will not involve being hated or laughed at. Difficult when you consider he's a teacher! Still - he does get long holidays!



## TANYA SMITH

Tanya is practically a 'virgin' compared to the rest of us - this being only her second Mitre production and first visit to Dawlish! She says her favourite role in *Godspell* has been playing the part of the sheep and hopes you don't find her accent too Baaaaaad! Tanya also performs with Croydon Operatic and Dramatic Association but still manages to find some spare time to perform her teaching duties as Head of Music at Addington High School. Another one with long holidays!



## JAMES SMOKER

David Essex; Darren Day; James Smoker. The latest in a long line of heartthrobs to take up the Messianic mantle, James feels a great 'communion' with the rest of the cast, has applied himself 'wholly' to the role, and will be very 'cross' if things go wrong. From a misanthropic Conrad in Bye Bye Birdie, to a lycanthropic Prince in Beauty and the Beast, to an off-topic assortment of fowl in Honk!, he hopes his philanthropic Jesus will rekindle the churchgoer in everyone.



James has just finished his A' Levels at Trinity School and will spend the next year there as an English/Drama Assistant.

## LORRAINE TITCHENER

Lorraine has been a Mitre Player for a few years now and has celebrated both her graduation and her birthday during rehearsals.



Wow! Lorraine loves the music for **Godspell** and says it makes her feel very holy - but she is not wholly sure why that is. Ha ha! She was pleased to be involved in choreographing some of the numbers in this show. Research for this project ranged from a meeting with the director in a public house and a meeting with other cast members in a swimming pool at midnight - the drinking of cocktails was purely to enhance artistic flair.

## NICHOLAS UGLOW

Having seen Honk!, Nicholas was determined to be on the 2003 tour merely for the sake of the tour; he wasn't sure Godspell was his cup of Earl Grey. Proved completely wrong, by a close-knit and highly talented cast, and Jolyon, he has appeared in many Trinity School shows in the last few years and is probably the youngest member of the cast (having turned 18 in July). Extremely sad to leave Trinity, he is confident that he will be returning



for the next 40 years with the Mitre Players. He makes clothes and is Noel Coward and Oscar Wilde in his spare time.

# The Mitre Players

Present

# THE MADNESS OF GEORGE III

By Alan Bennett

Directed by Paul Smith

The Mitre Theatre  
Trinity School  
Shirley Park  
Croydon

Box Office  
0845 2255799

[www.mitreplayers.org.uk](http://www.mitreplayers.org.uk)

Thursday 23rd to  
Saturday 25th October 2003 at 7.30pm



# Dawlish Repertory Company

## At The Shaftesbury Theatre

2003/2004

Season

14<sup>th</sup> – 18<sup>th</sup> October 2003

A MONTH OF SUNDAYS

A play by Bob Larby

Directed by Sheila Stanway

9<sup>th</sup> – 17<sup>th</sup> January 2004

SLEEPING BEAUTY

A traditional pantomime

Directed by Alison Matanle

